

Workforce Training & Education SE Kent, Surrey and Sussex Primary Care

Working across Kent Surrey & Sussex as part of the South East

The Primary Care Department is responsible for the delivery of general practice education, alongside training and development for the multi-professional primary care workforce.

Our passion is making Primary Care the best place to work in the NHS.

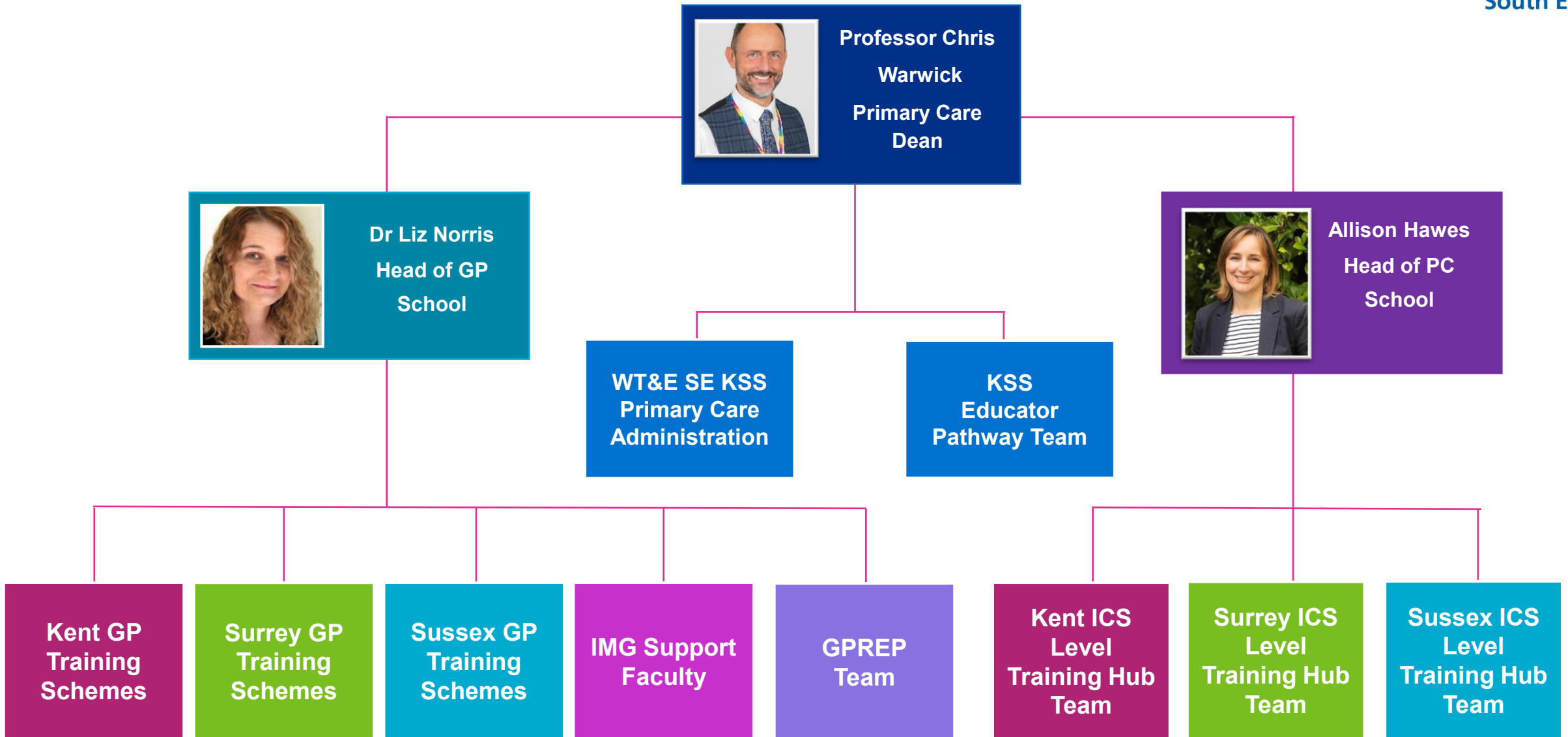


Contents

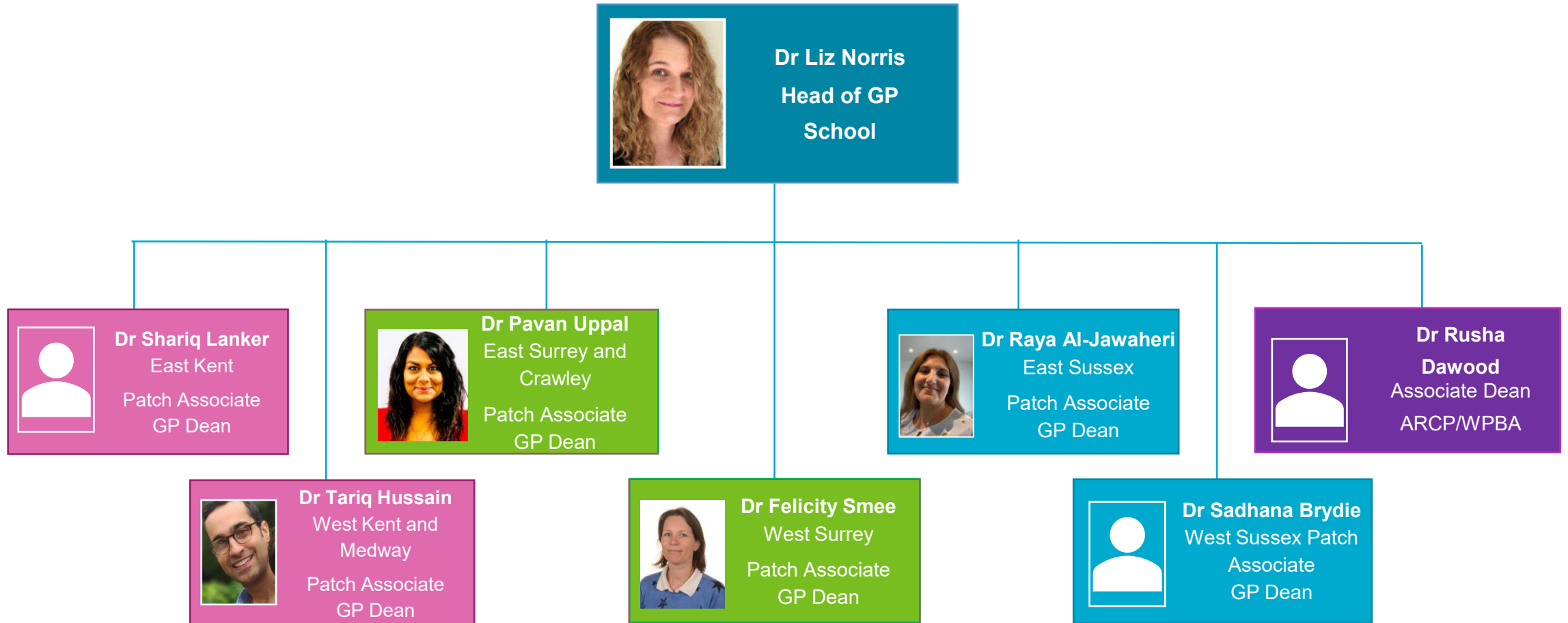
- [WT&E SE KSS Primary Care overview](#)
- [General Practice School structure](#)
- [Primary Care School structure](#)
- [East Kent GP Training scheme](#)
- [West Kent & Medway GP Training scheme](#)
- [Kent ICS & Locality Training Hub structure](#)
- [East Surrey GP Training scheme](#)
- [West Surrey GP Training scheme](#)
- [Surrey ICS & Locality Training Hub structure](#)
- [East Sussex GP Training scheme](#)
- [West Sussex GP Training scheme](#)
- [Sussex ICS & Locality Training Hub structure](#)
- [International Medical Graduate Faculty](#)
- [Administration team](#)



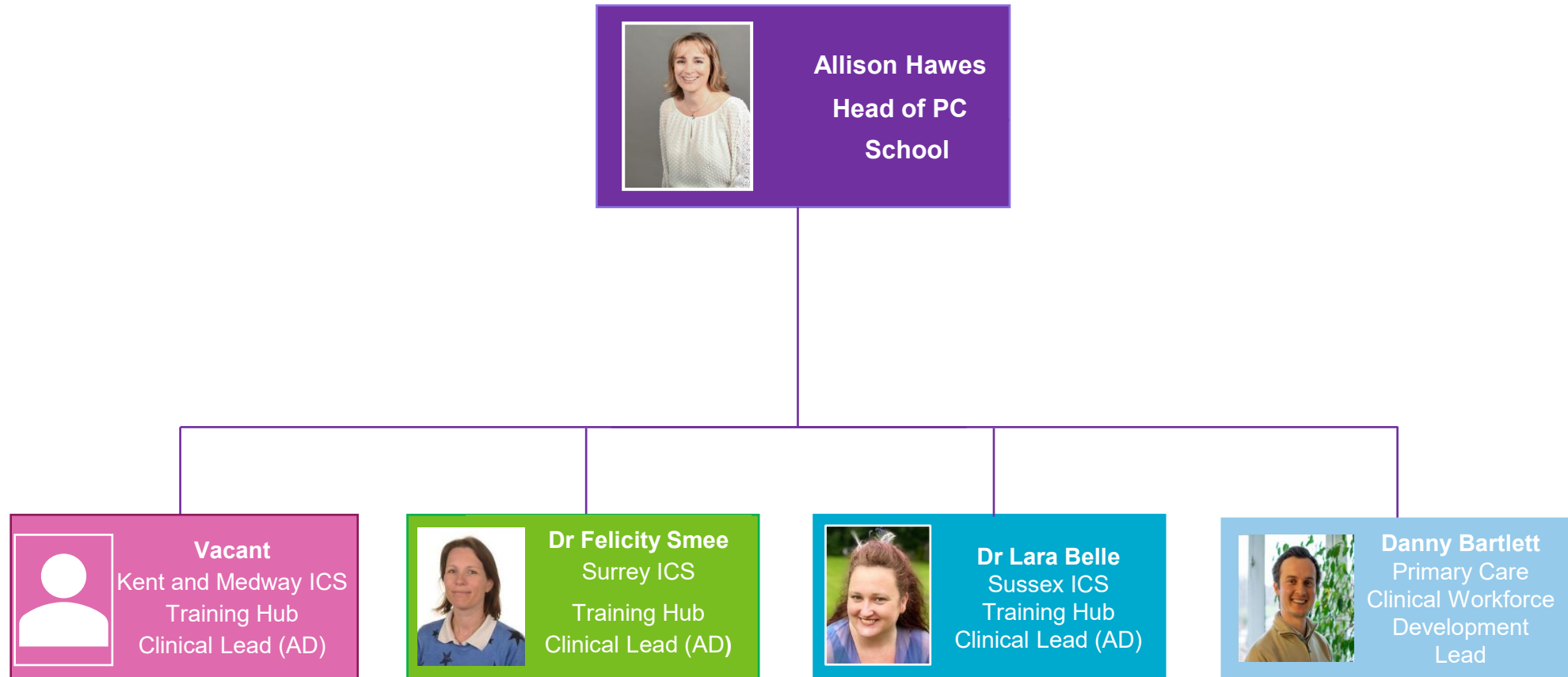
KSS Primary Care Department



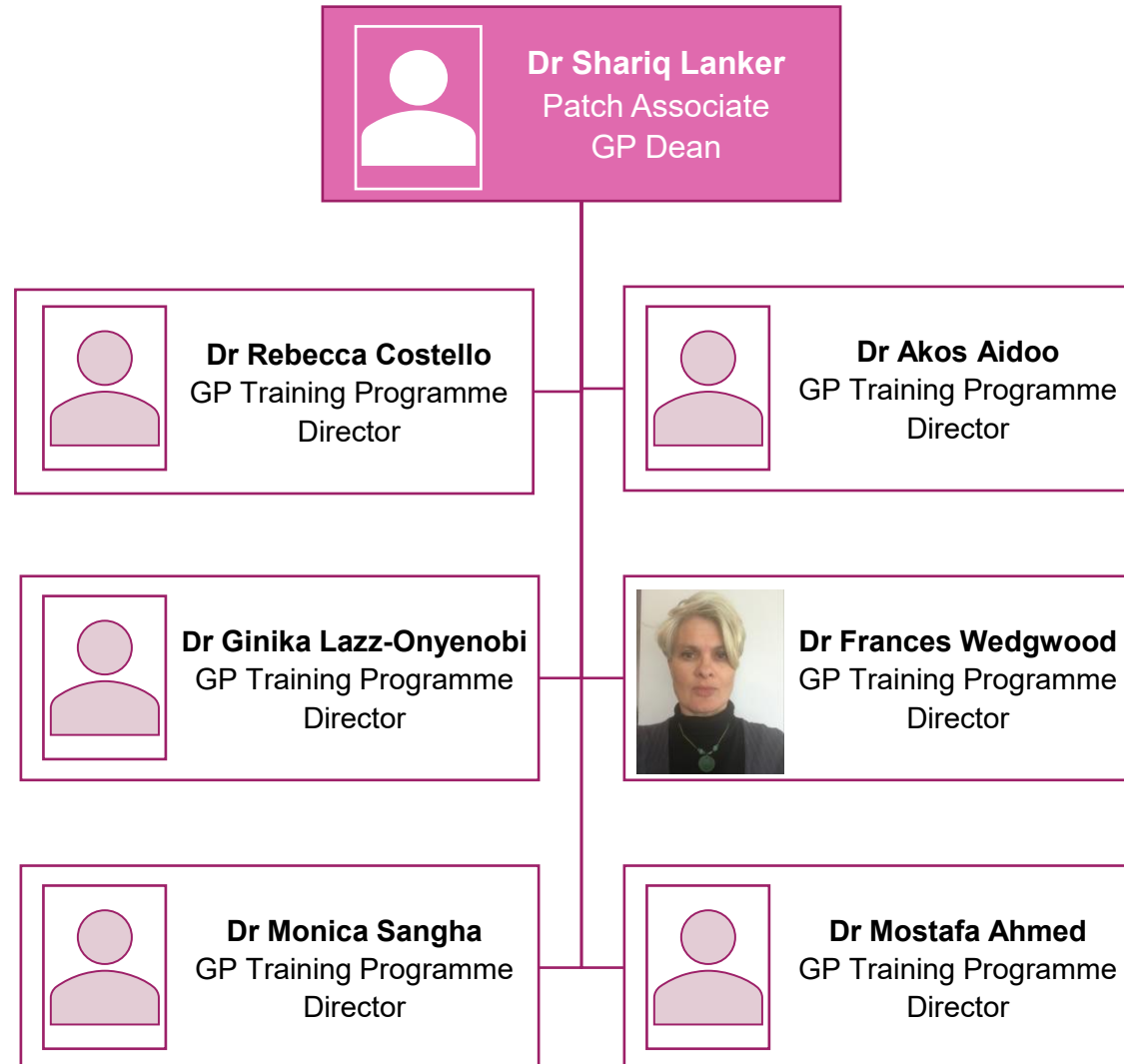
General Practice School Structure



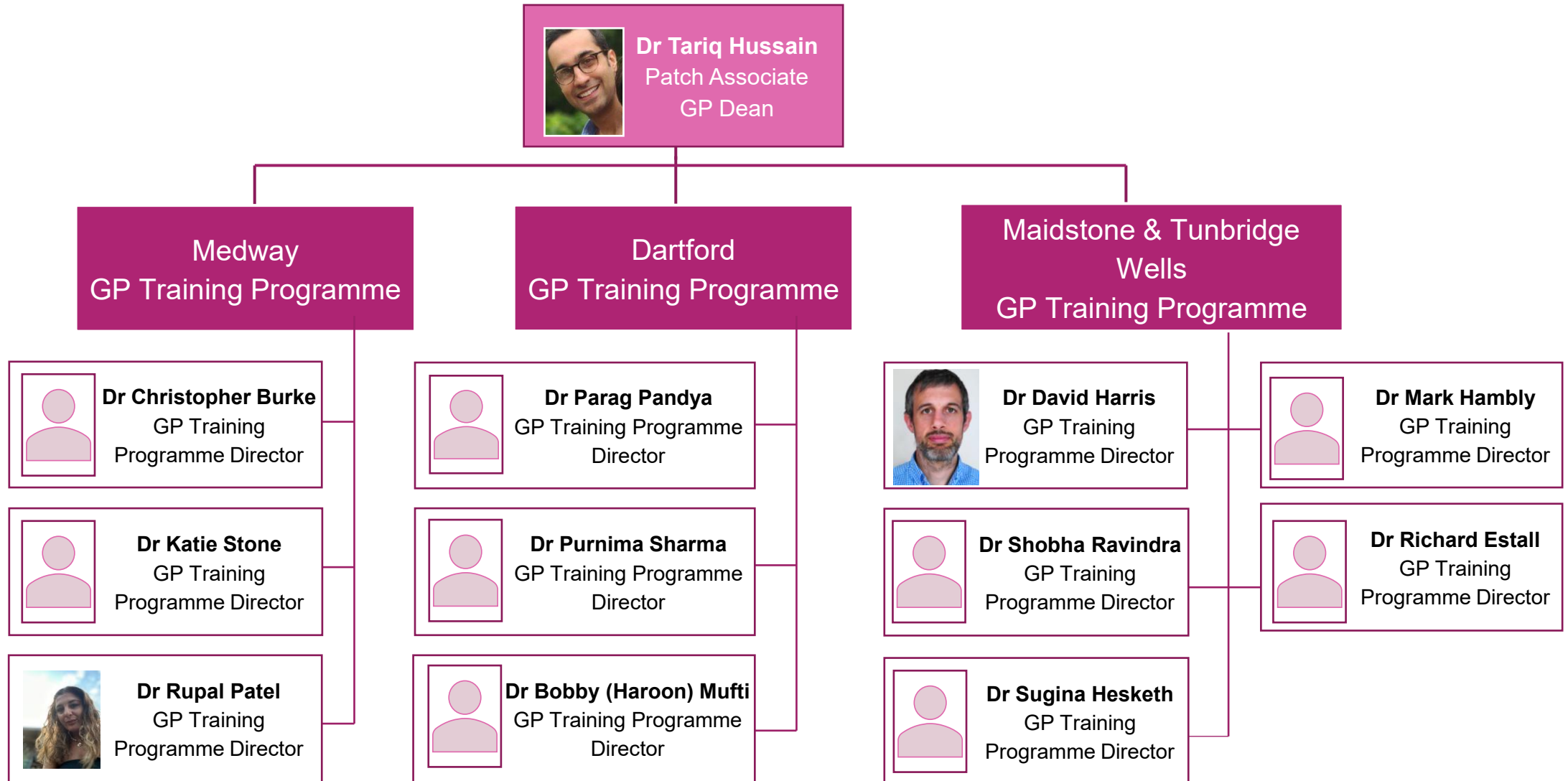
Primary Care School Structure



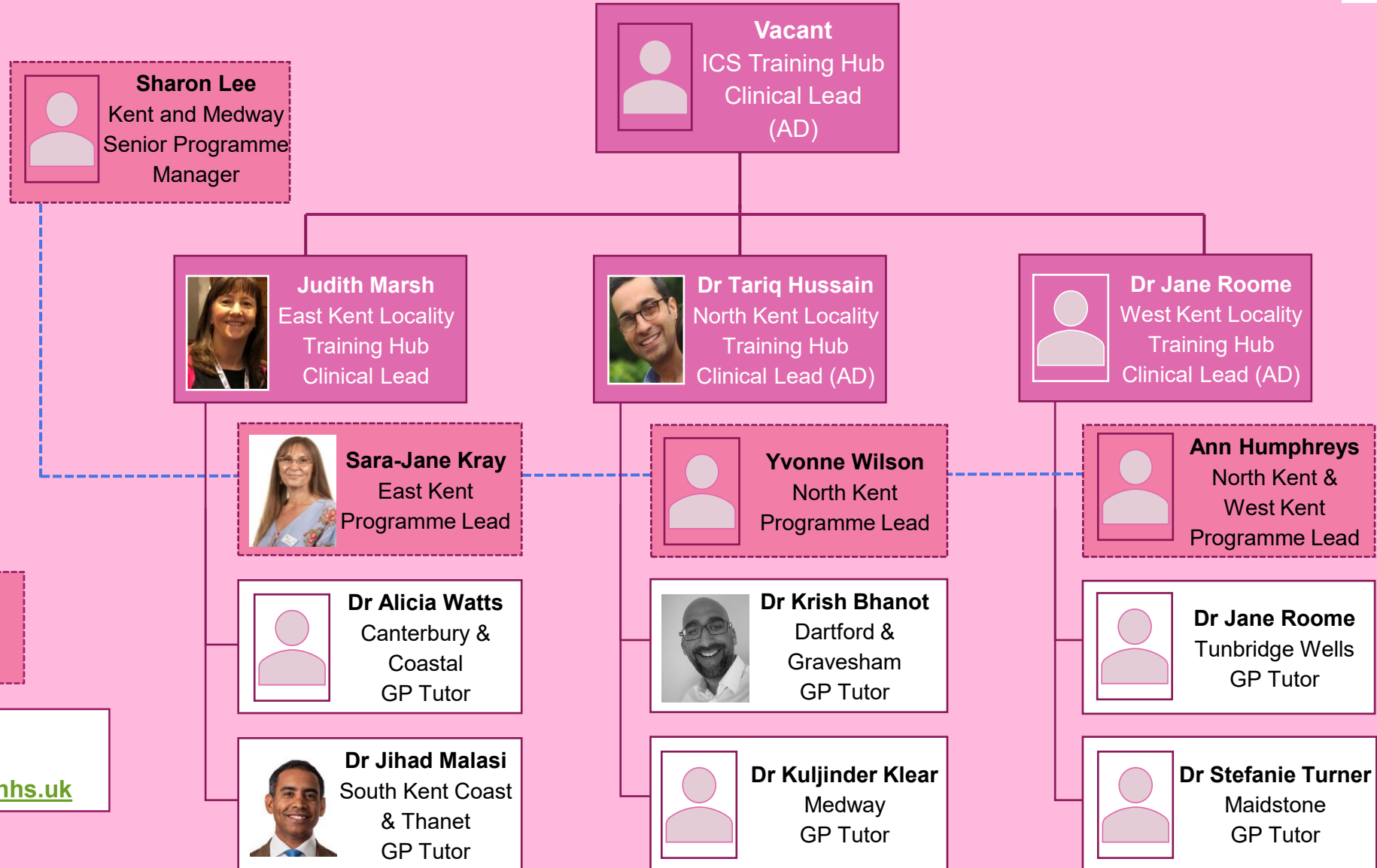
East Kent GP Specialty Training Scheme



North & West Kent GP Specialty Training Schemes



Kent ICS & Locality Training Hub structure



***ICS employed Training Hub Roles**

Contact:
kmpcth@nhs.net
www.kmpctraininghub.nhs.uk

East Surrey GP Specialty Training Schemes



Dr Pavan Uppal
Patch Associate
GP Dean


Crawley & East Surrey GP Training Programme




Dr Anita Raina
GP Training
Programme Director



Dr Max Cooper
GP Training
Programme Director



Dr Naomi Lauret
GP Training
Programme Director



Dr Julian Alfrey
GP Training
Programme Director

Epsom GP Training Programme



Dr John Emberton
GP Training
Programme Director



Dr Neil Dhoul
GP Training
Programme Director

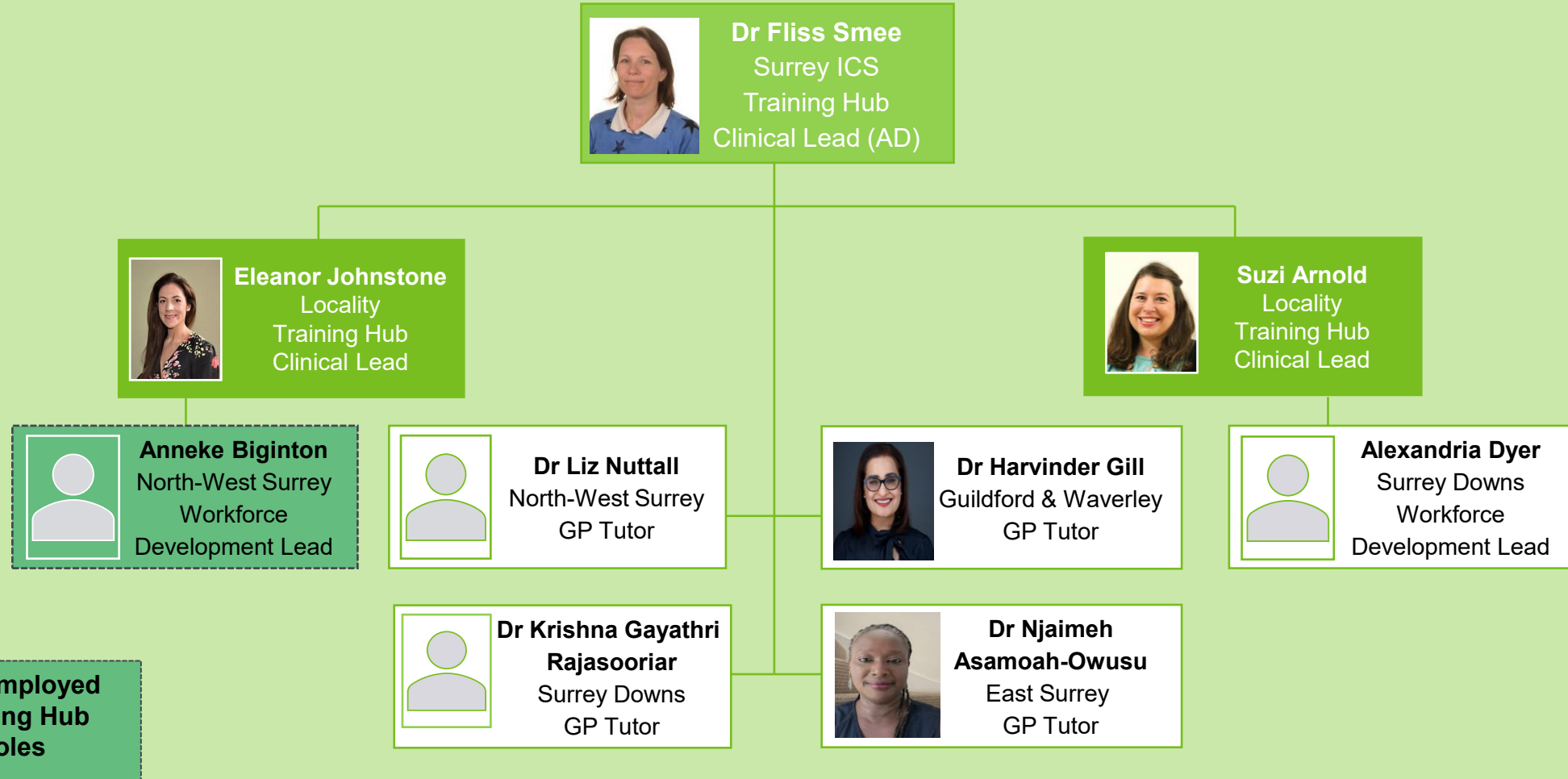


Dr Laura Fraser
GP Training
Programme Director

West Surrey GP Specialty Training Schemes



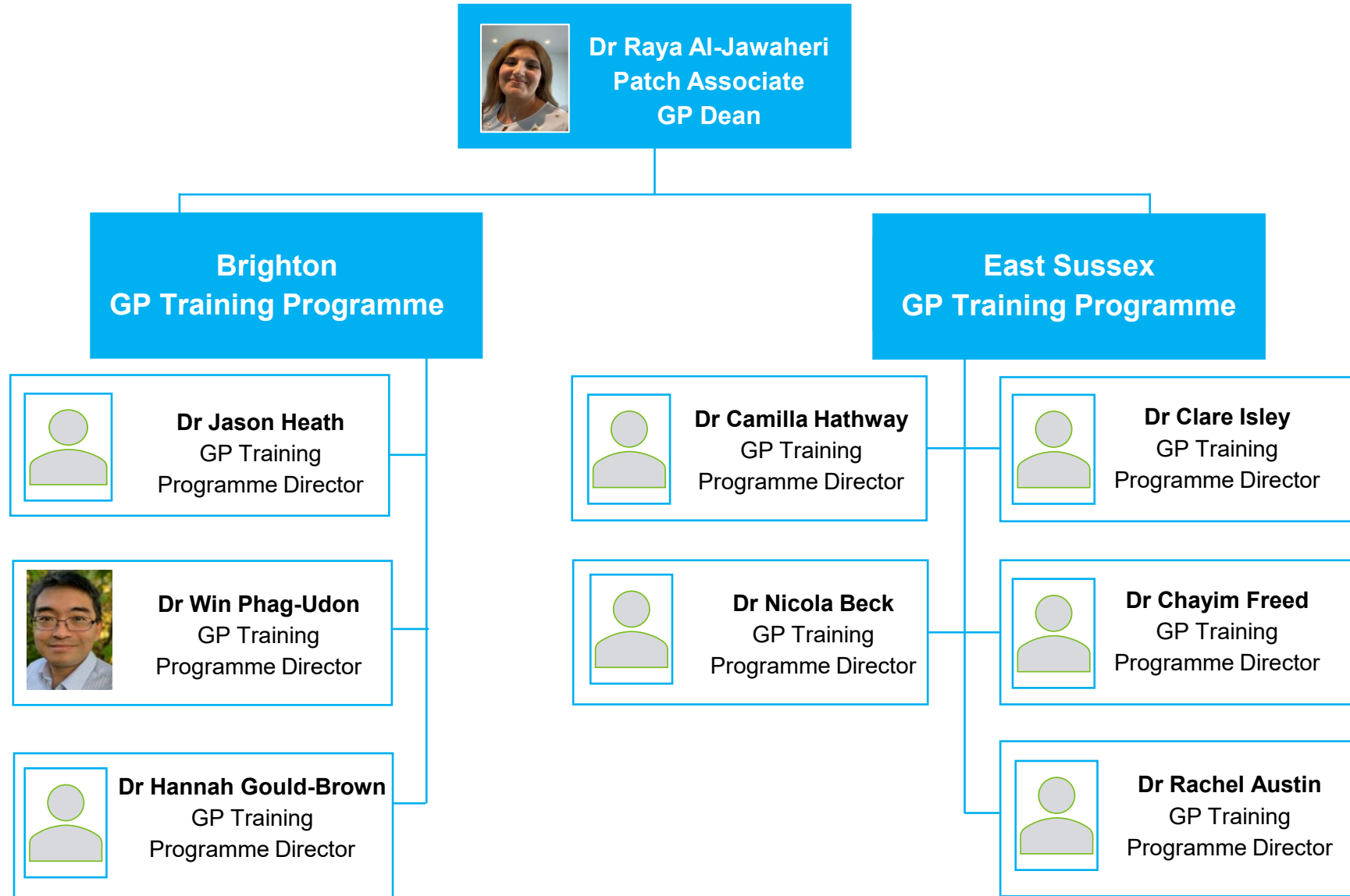
Surrey ICS Training Hub structure



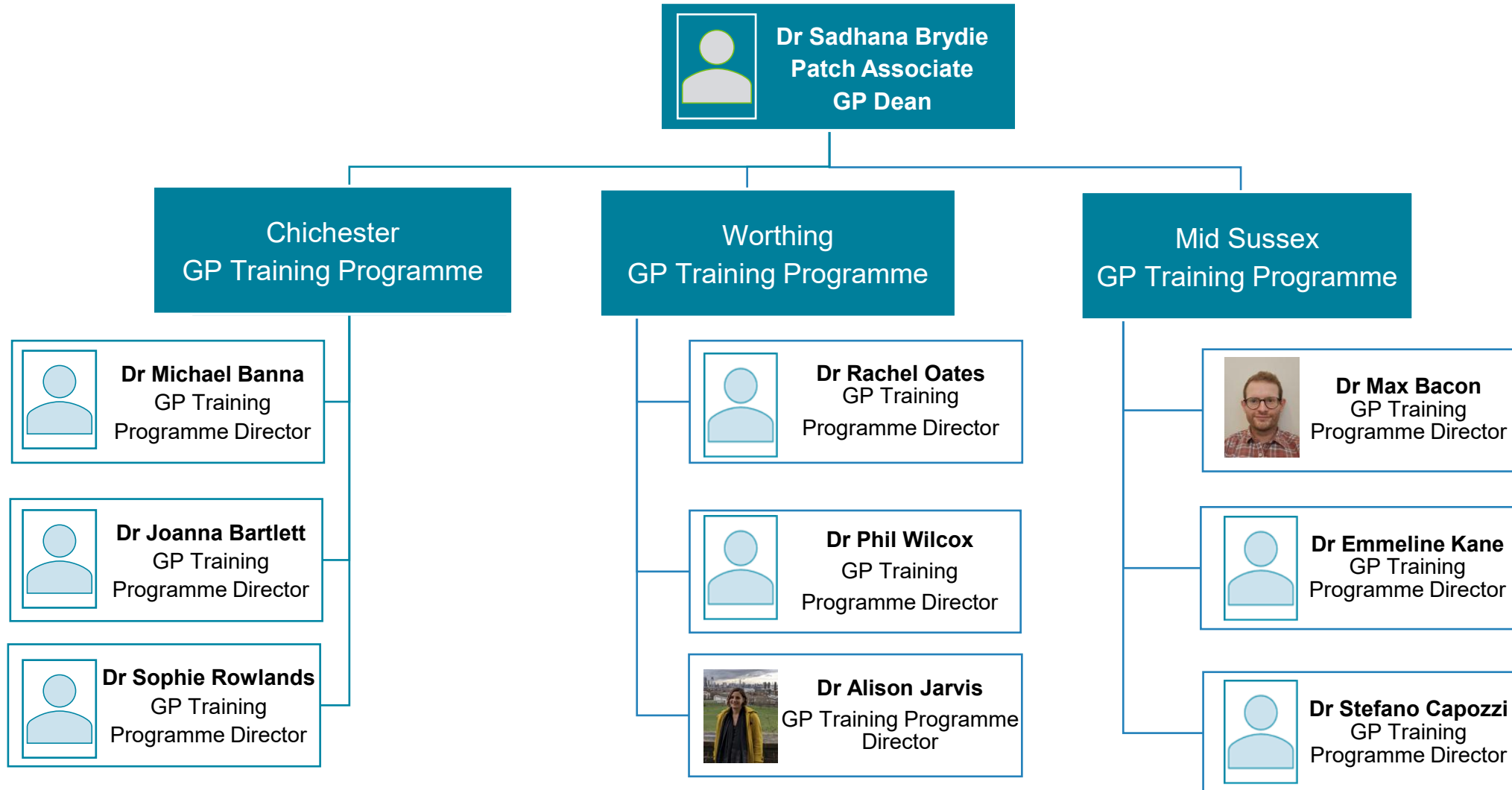
***ICS employed
Training Hub
Roles**

Contact:
syheartslandsicb.surreytraininghub@nhs.net
www.surreytraininghub.co.uk

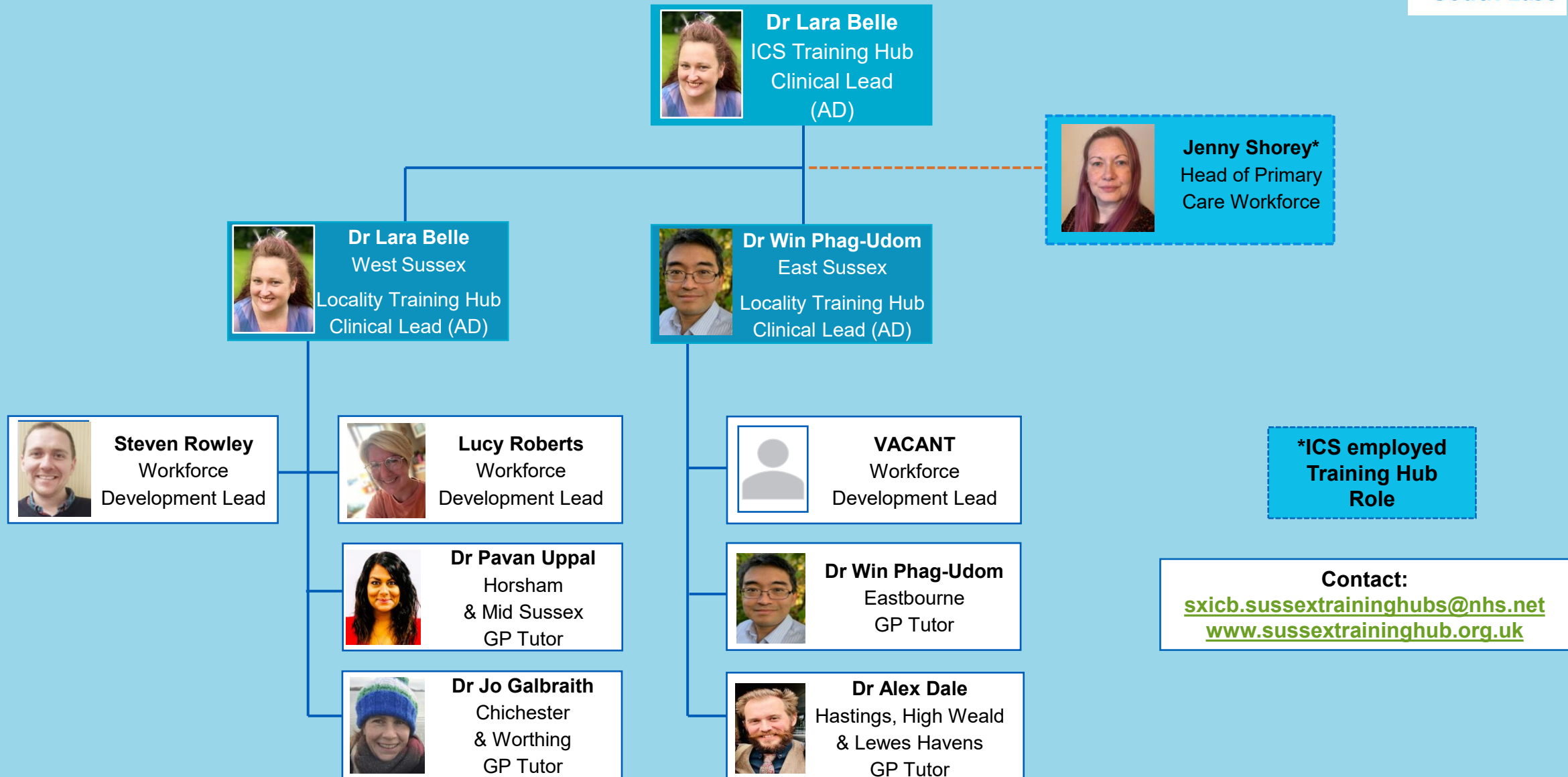
East Sussex GP Specialty Training Schemes



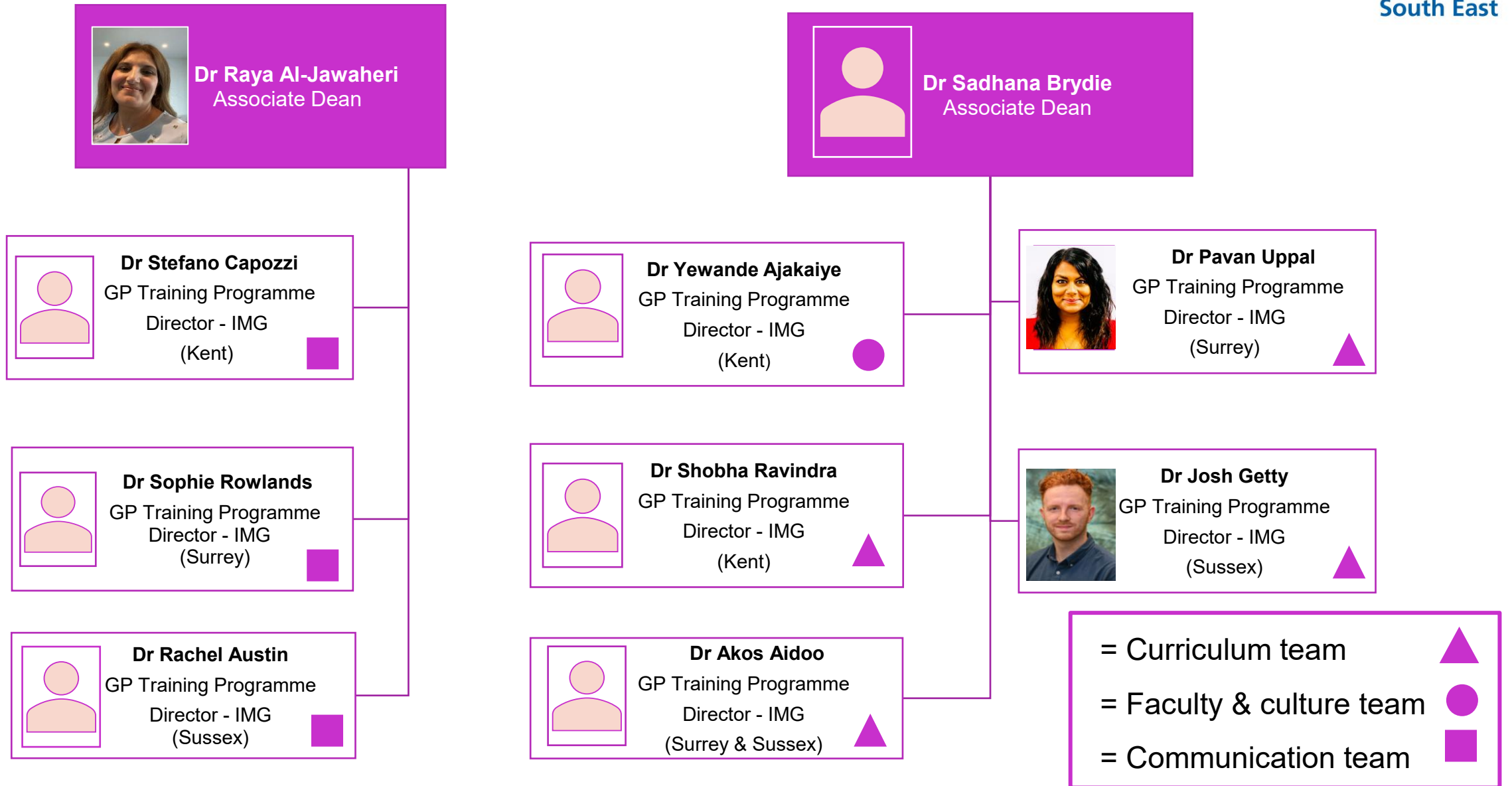
Mid and West Sussex GP Specialty Training Schemes



Sussex ICS & Locality Training Hub structure



International Medical Graduate (IMG) Support faculty



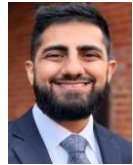
GP Renewal and Expansion Programme (GPREP)



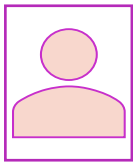
Dr Raya Al-Jawaheri
Associate Dean
GPREP
Surrey & Sussex



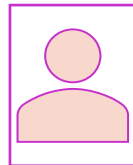
Dr Pavan Uppal
Associate Dean
GPREP
Kent & Medway



Dr Naveed Khan
GP Training Programme
Director – GPREP
(Surrey and Sussex)



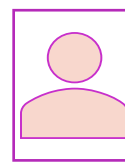
Dr Nicholas Harvey
GP Training Programme
Director – GPREP
(Surrey and Sussex)



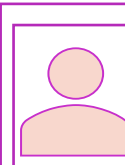
Dr Pete Deveson
GP Training Programme
Director – GPREP
(Surrey and Sussex)



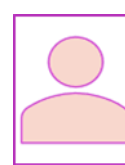
Dr Tom Rustom
GP Training Programme
Director – GPREP
(Surrey and Sussex)



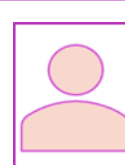
Dr Stefanie Turner
GP Training Programme
Director – GPREP
(Kent and Medway)



Dr Obinna Ede
GP Training Programme
Director - GPREP
(Kent and Medway)

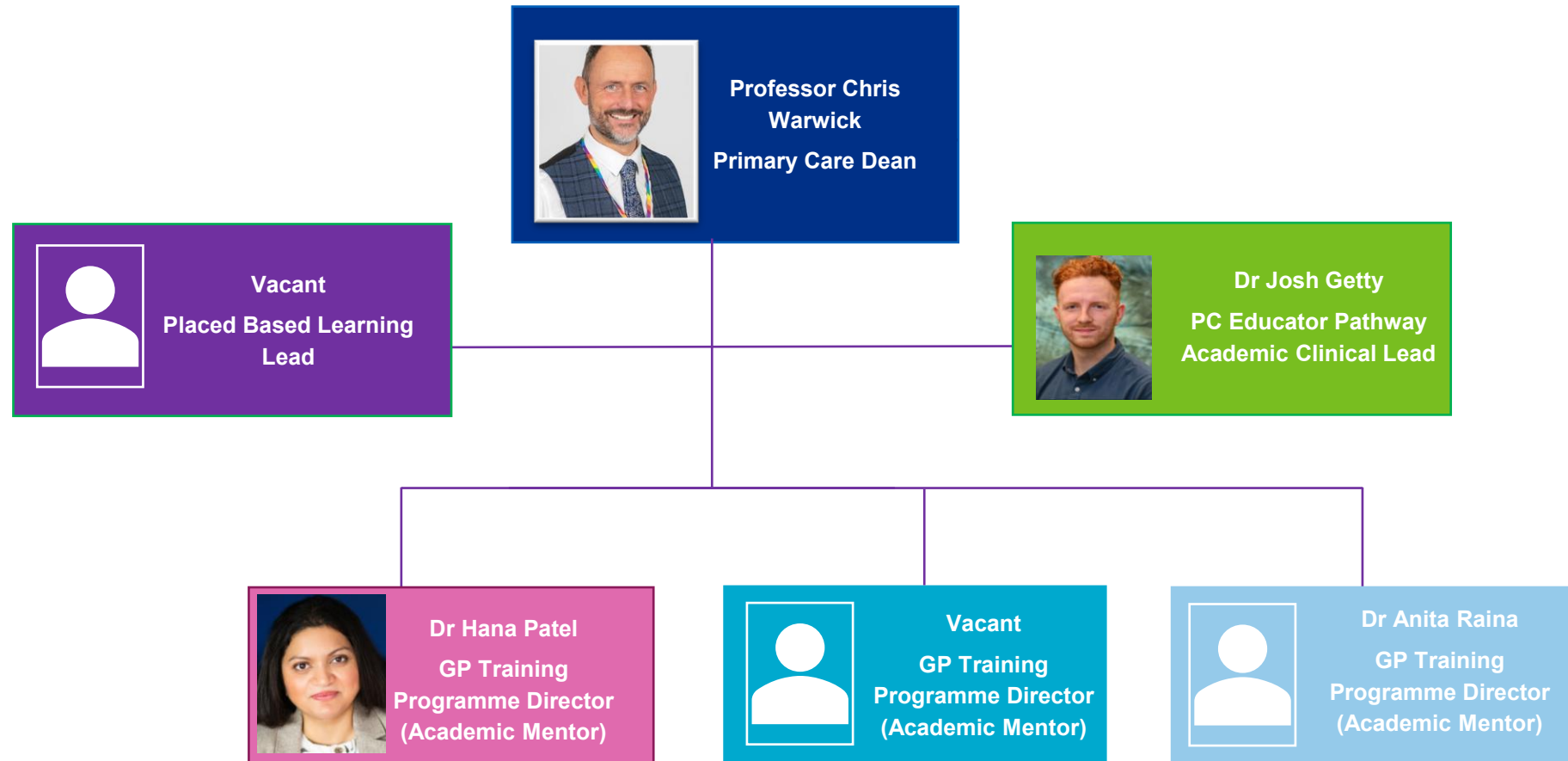


Dr Vimbai Duncan
GP Training Programme
Director - GPREP
(Kent and Medway)



Dr Edward Miller
GP Training Programme
Director - GPREP
(Kent and Medway)

Educator Pathway Team



WT&E SE KSS Primary Care administration structure

For GP School (including GP Retention Scheme, or Faculty Simulations)

england.ksspc.gpschool@nhs.net

For GP educator pathway enquiries

england.ksspc.educatorpathway@nhs.net

For Primary Care Quality enquiries (including GP educator accreditation)

england.ksspc.educationquality@nhs.net

For Primary Care School enquiries

england.ksspc.pcschool@nhs.net

