

Workforce Training & Education SE Kent, Surrey and Sussex Primary Care

Working across Kent Surrey & Sussex as part of the South East

The Primary Care Department is responsible for the delivery of general practice education, alongside training and development for the multi-professional primary care workforce.

Our passion is making Primary Care the best place to work in the NHS.

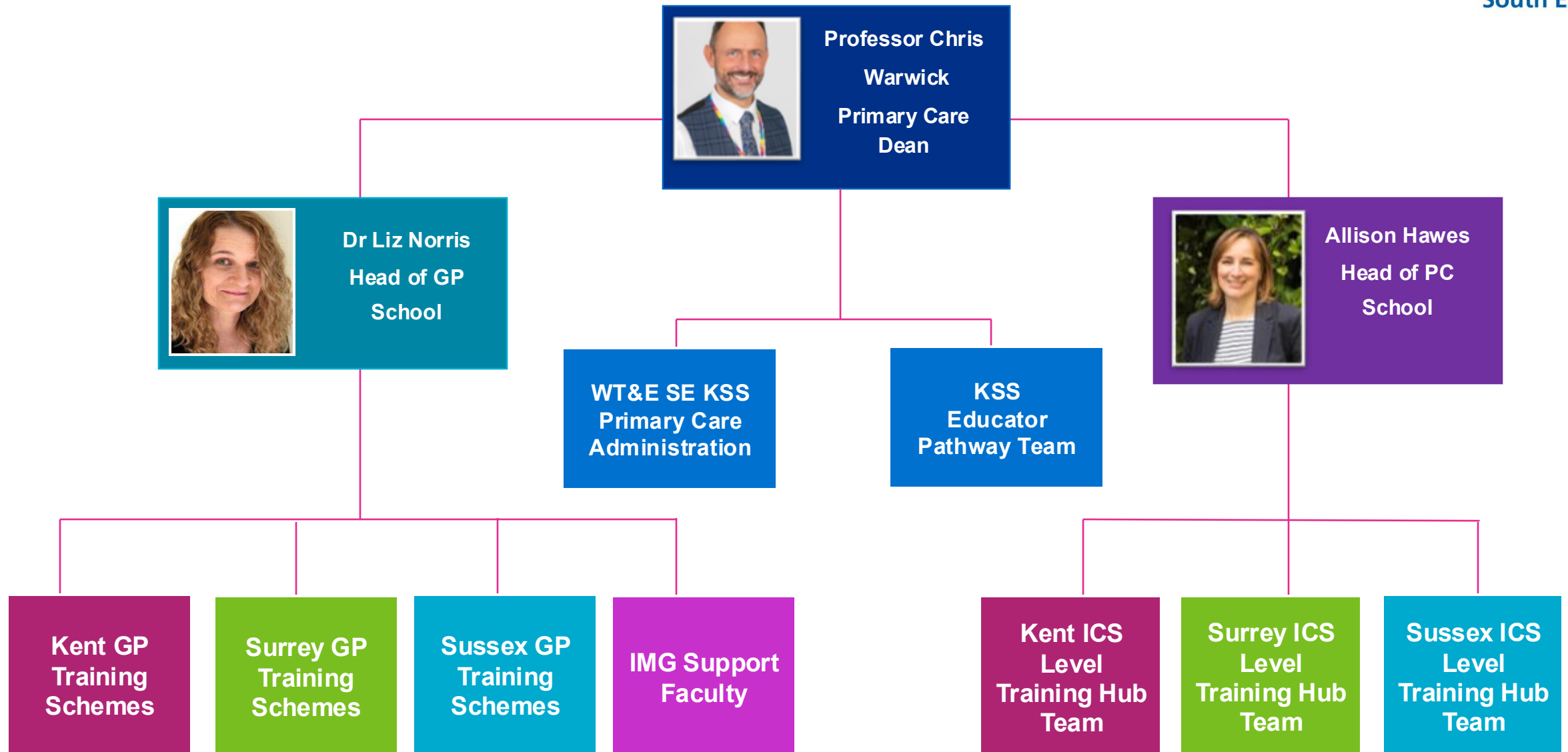


Contents

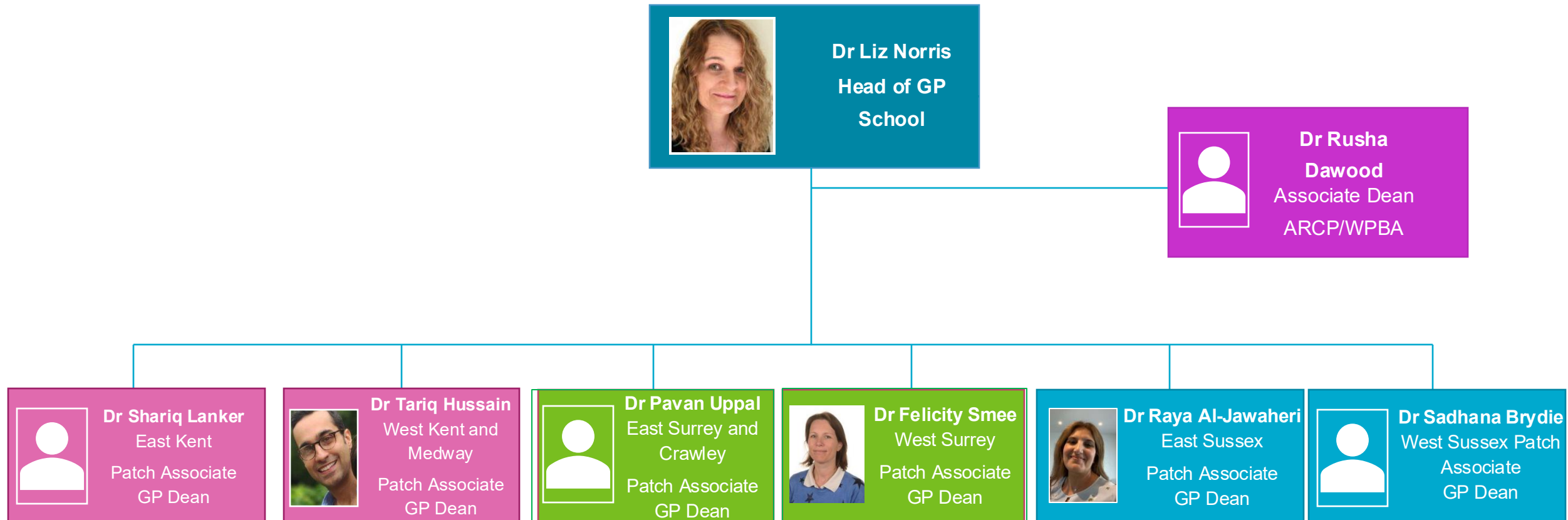
- [WT&E SE KSS Primary Care overview](#)
- [General Practice School structure](#)
- [Primary Care School structure](#)
- [East Kent GP Training scheme](#)
- [West Kent & Medway GP Training scheme](#)
- [Kent ICS & Locality Training Hub structure](#)
- [East Surrey GP Training scheme](#)
- [West Surrey GP Training scheme](#)
- [Surrey ICS & Locality Training Hub structure](#)
- [East Sussex GP Training scheme](#)
- [West Sussex GP Training scheme](#)
- [Sussex ICS & Locality Training Hub structure](#)
- [International Medical Graduate Faculty](#)
- [Administration team](#)



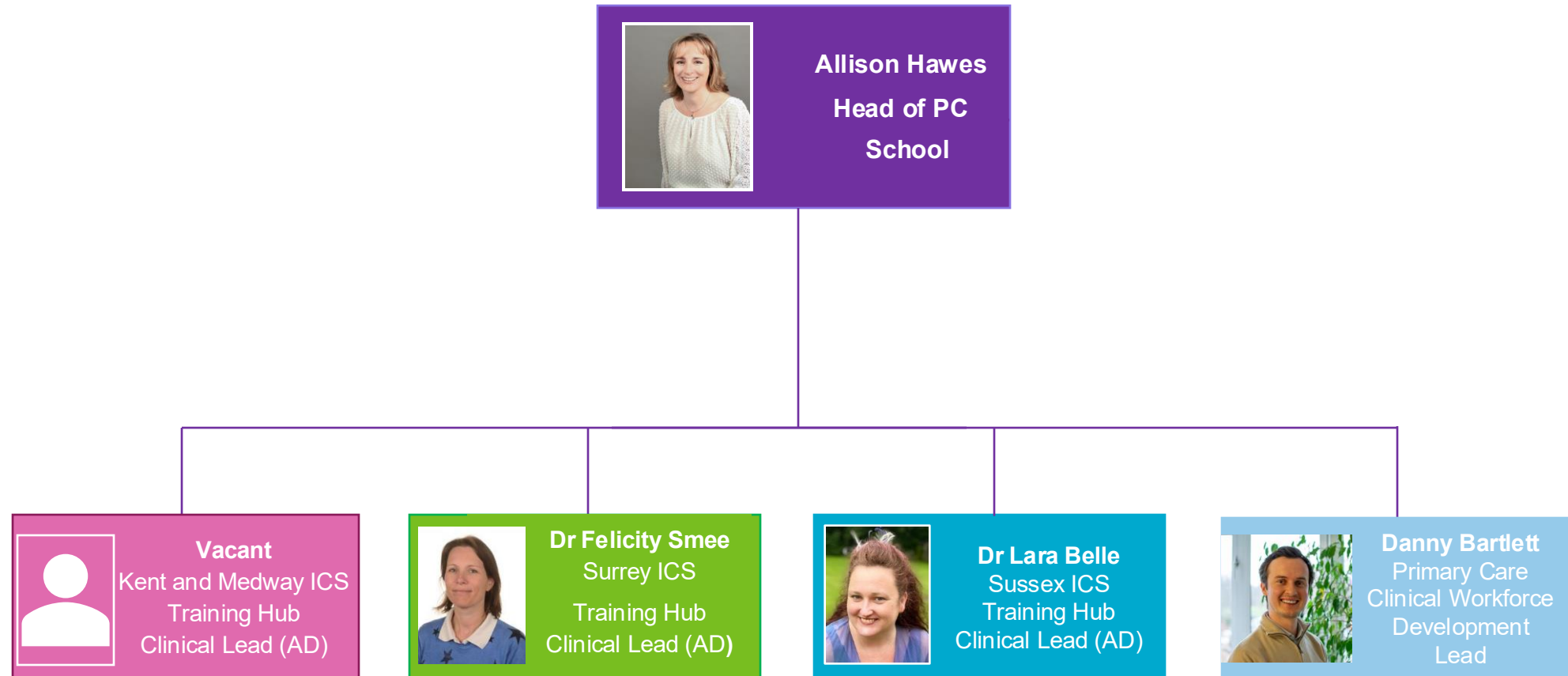
KSS Primary Care Department



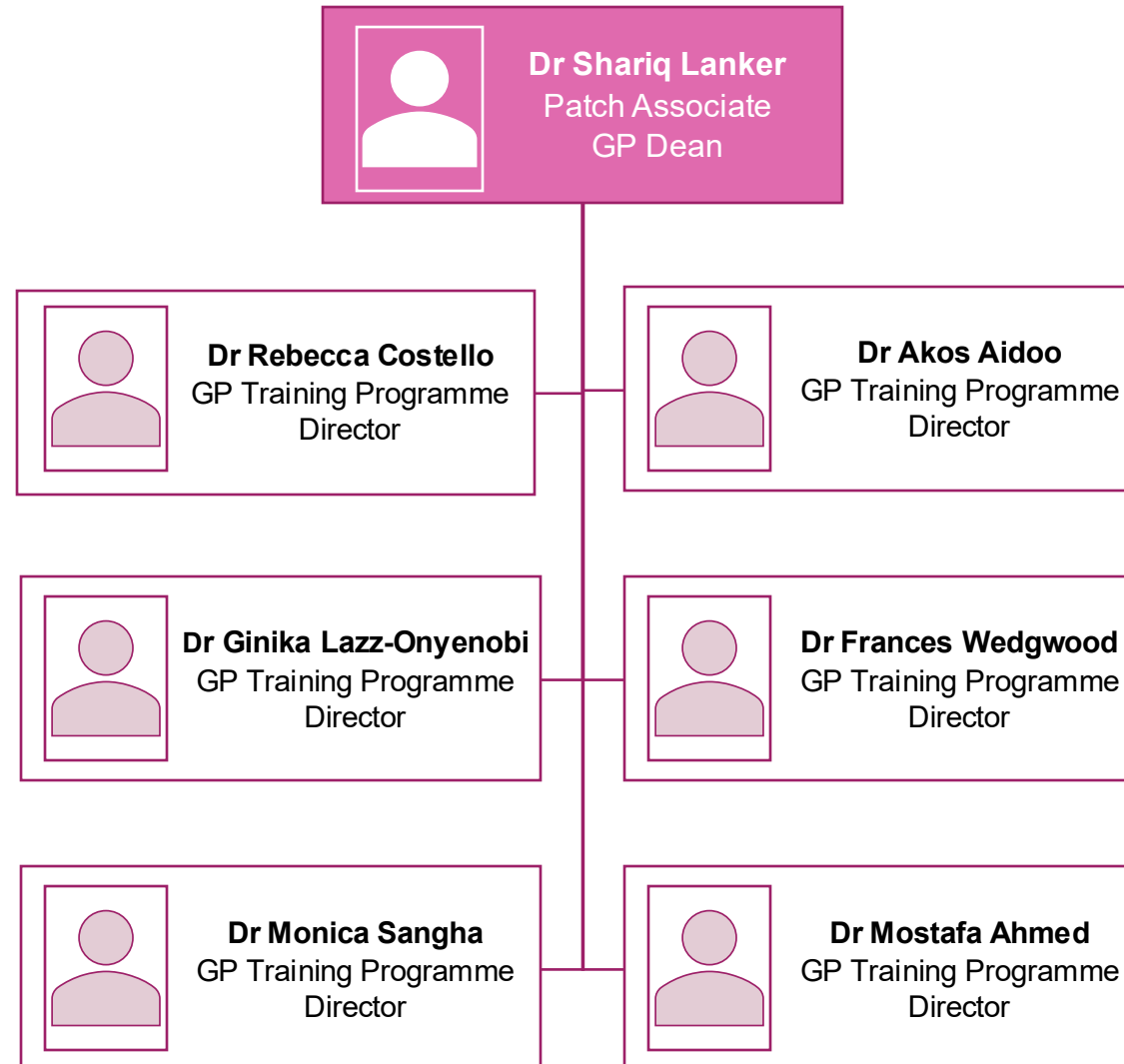
General Practice School Structure



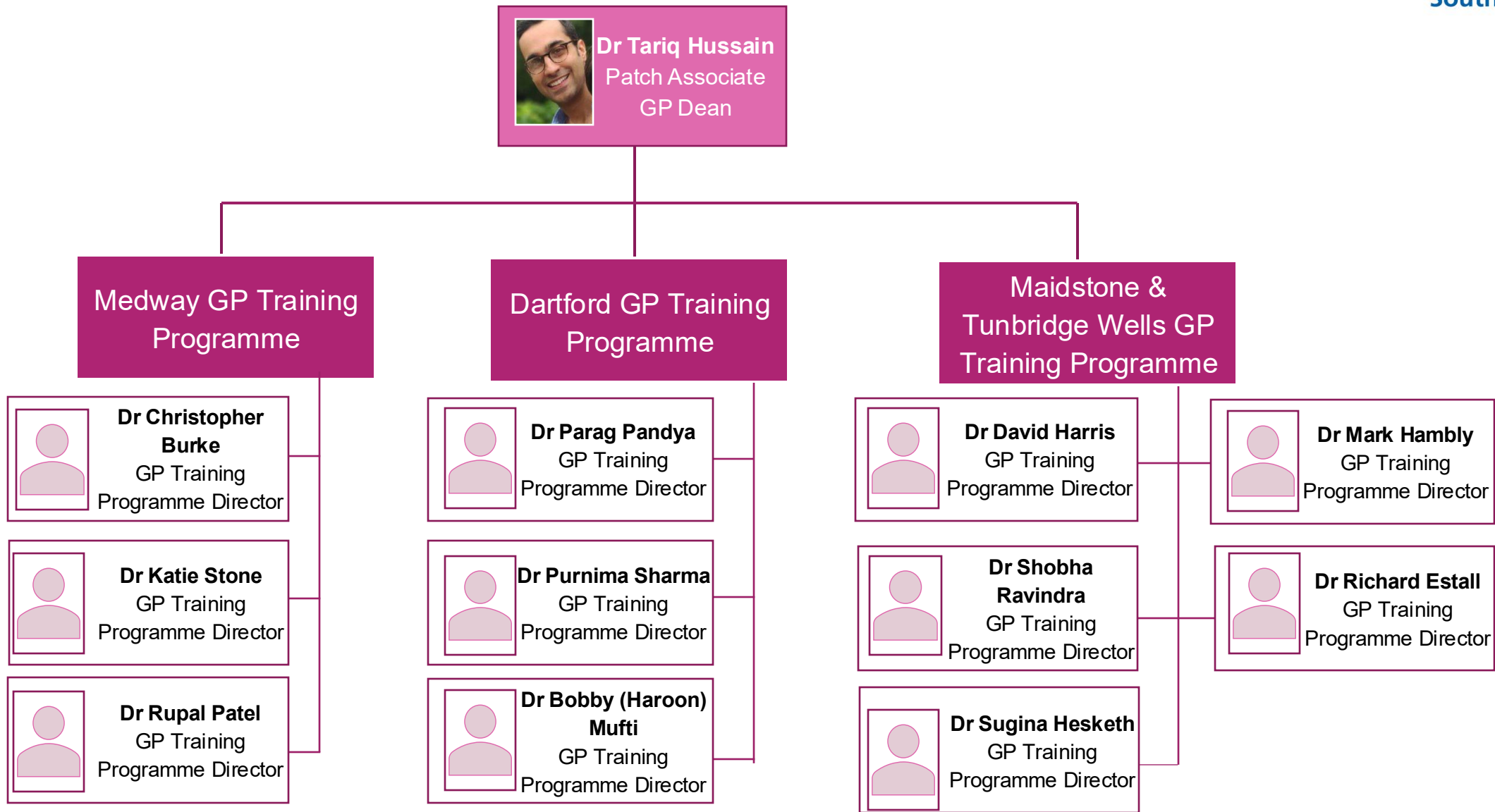
Primary Care School Structure



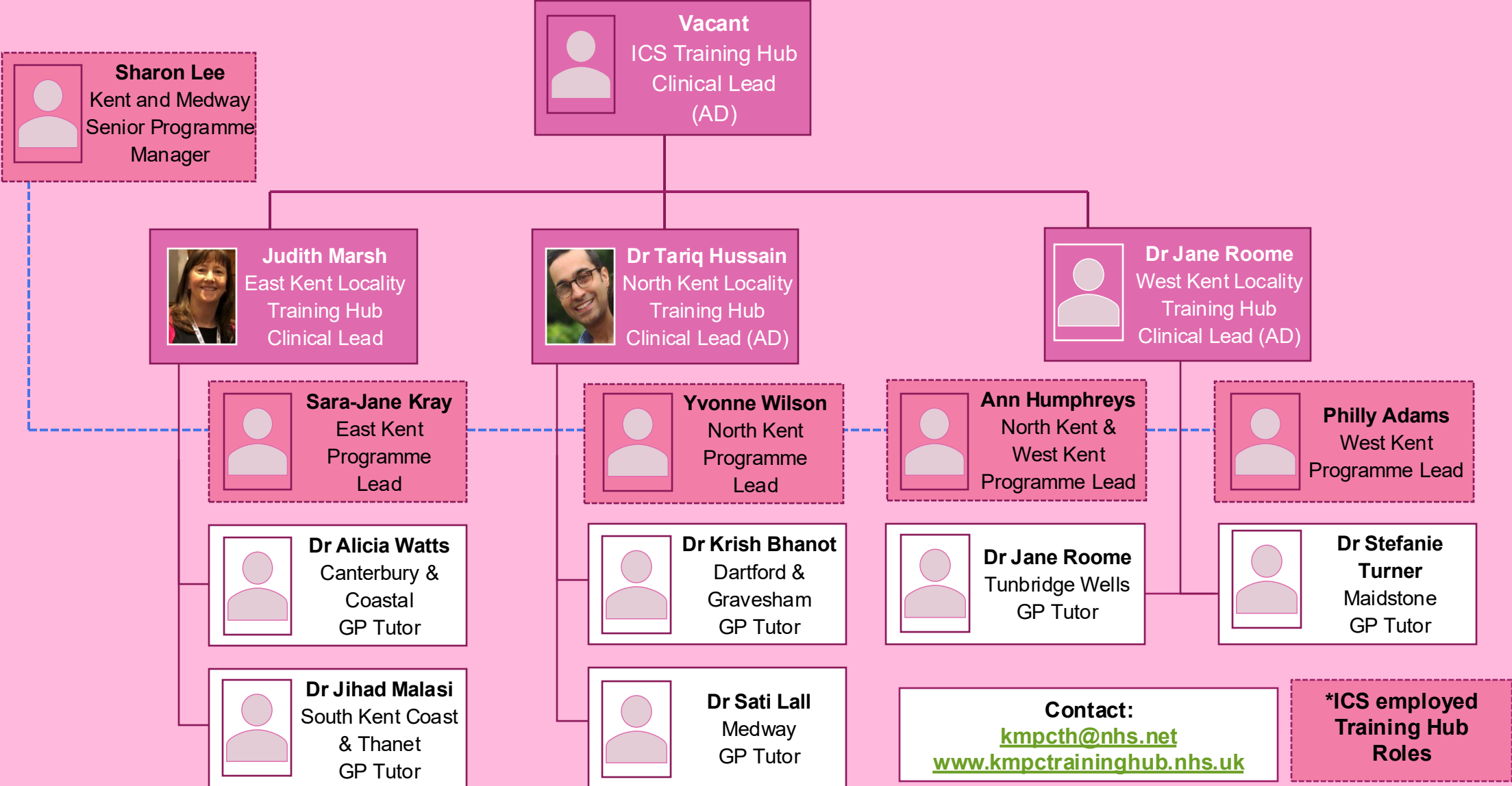
East Kent GP Specialty Training Scheme



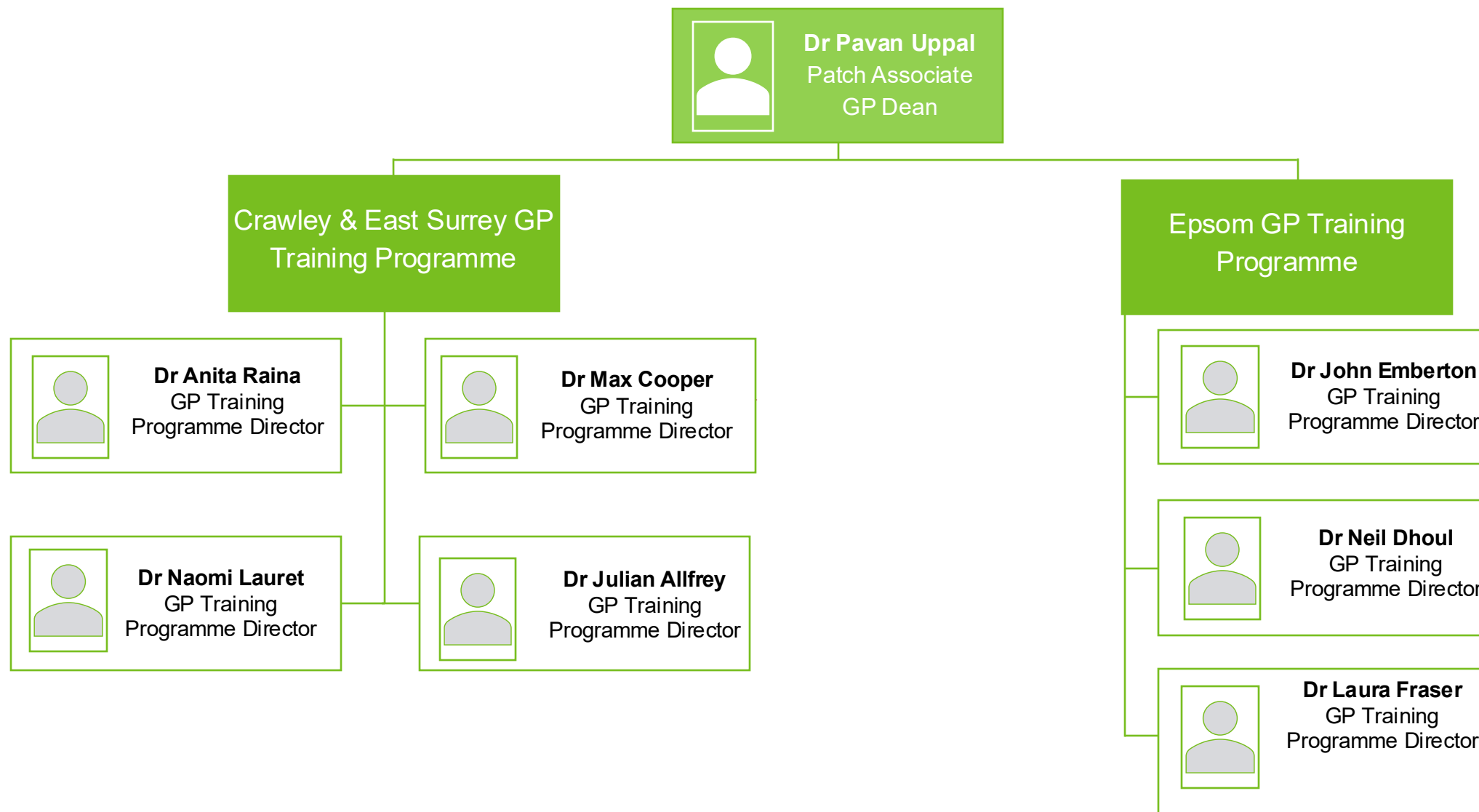
North & West Kent GP Specialty Training Schemes



Kent ICS & Locality Training Hub structure



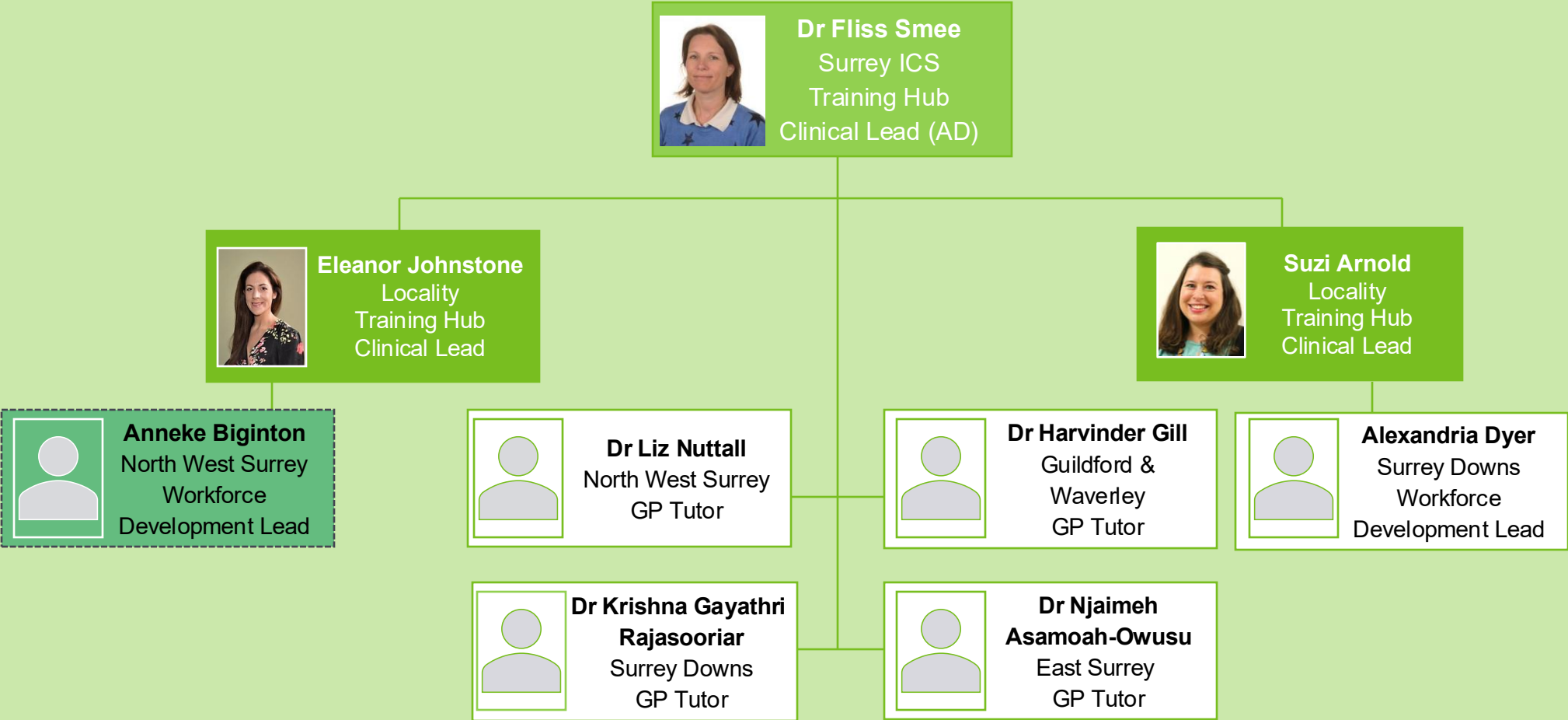
East Surrey GP Specialty Training Schemes



West Surrey GP Specialty Training Schemes



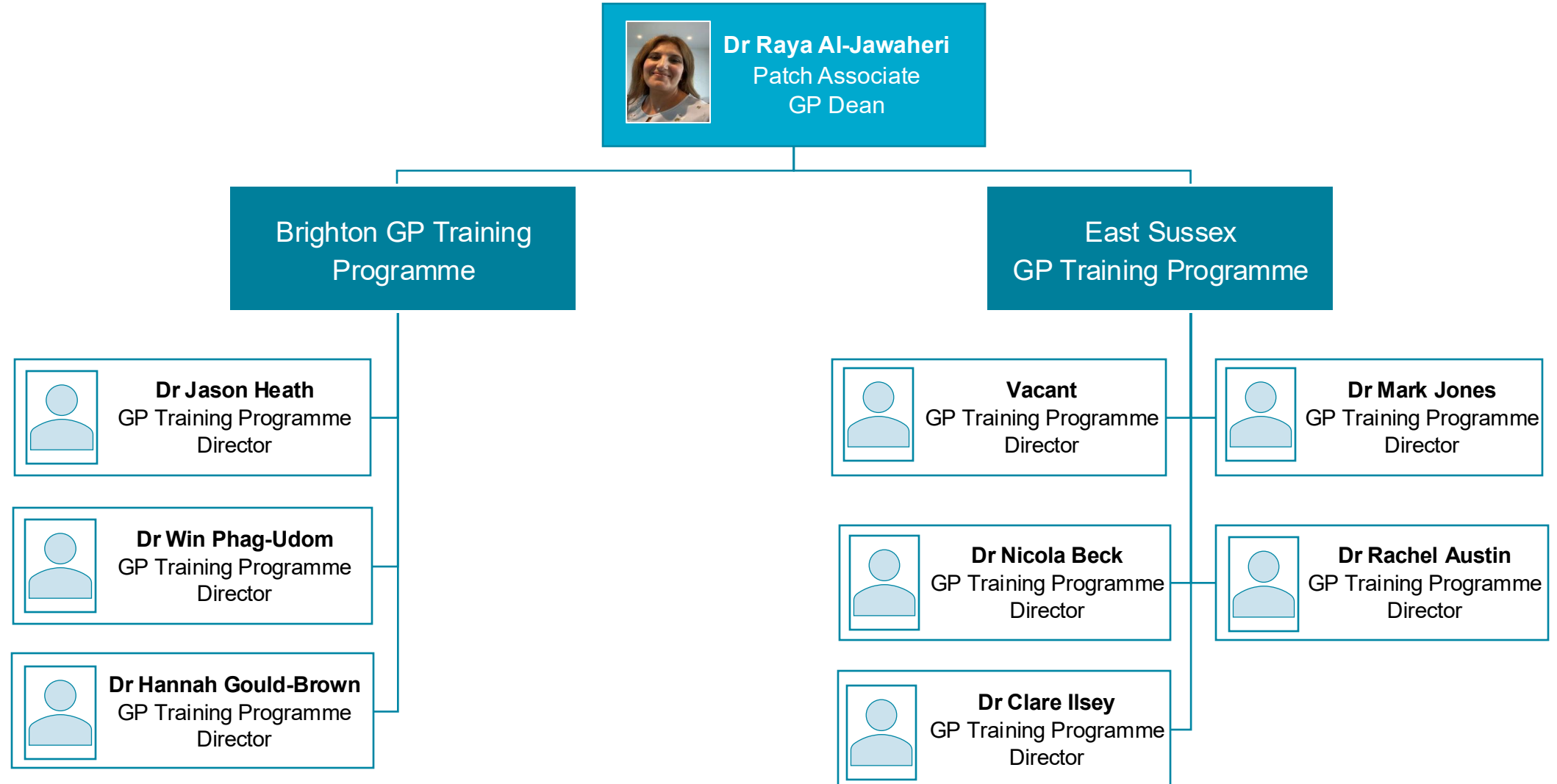
Surrey ICS Training Hub structure



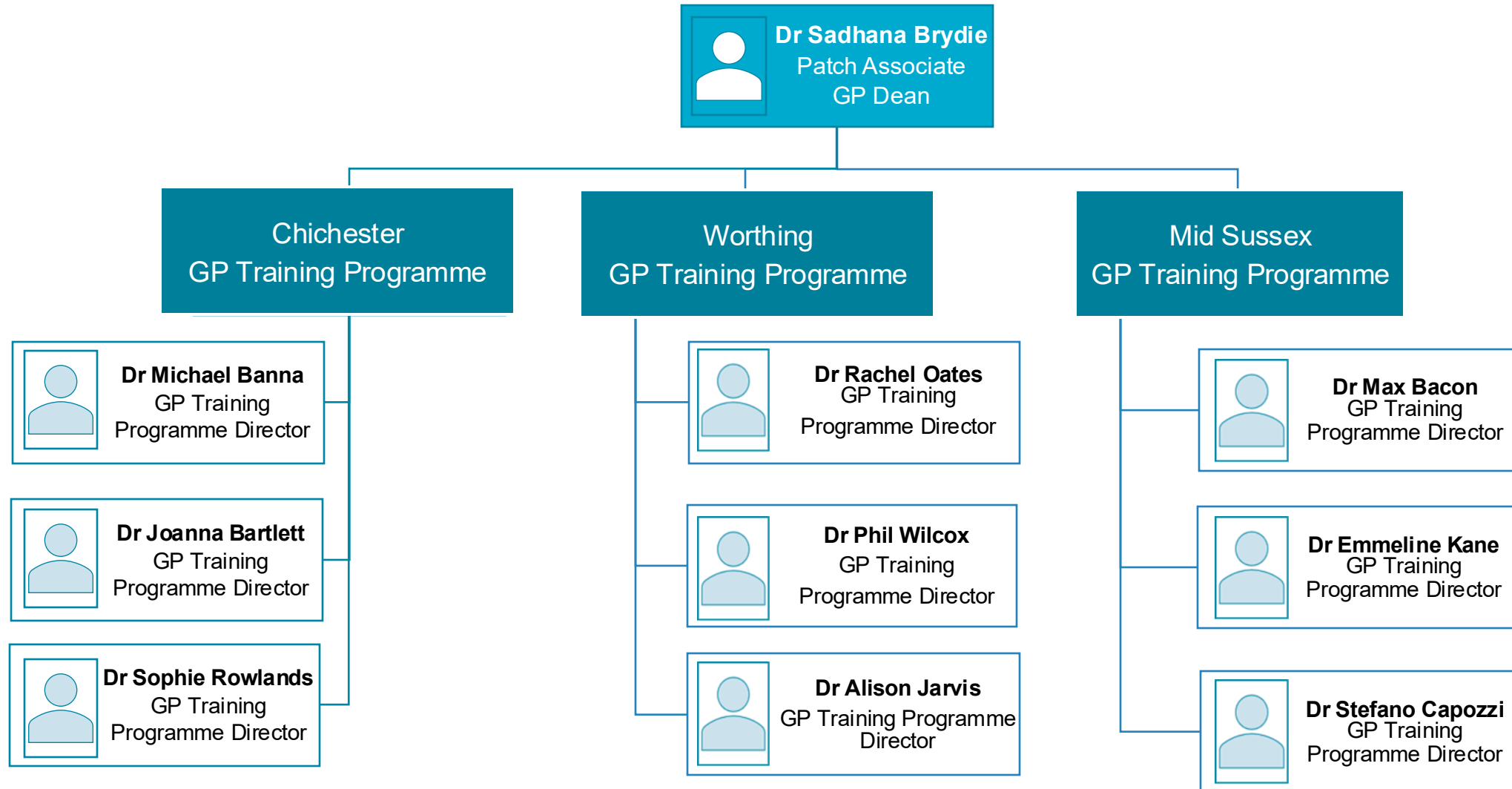
Contact:
syheartslandsicb.surreytraininghub@nhs.net
www.surreytraininghub.co.uk

***ICS employed
Training Hub
Roles**

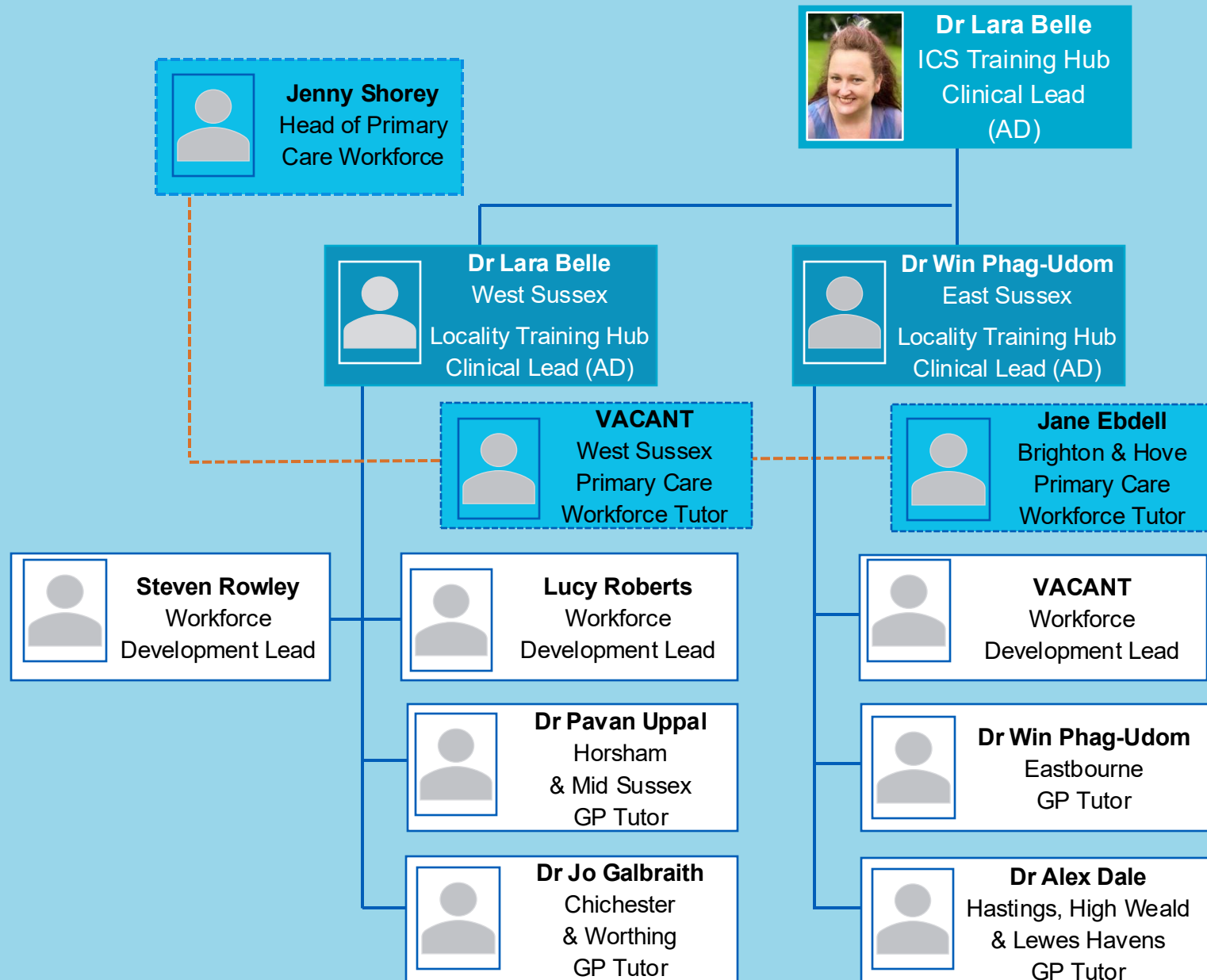
East Sussex GP Specialty Training Schemes



Mid and West Sussex GP Specialty Training Schemes



Sussex ICS & Locality Training Hub structure

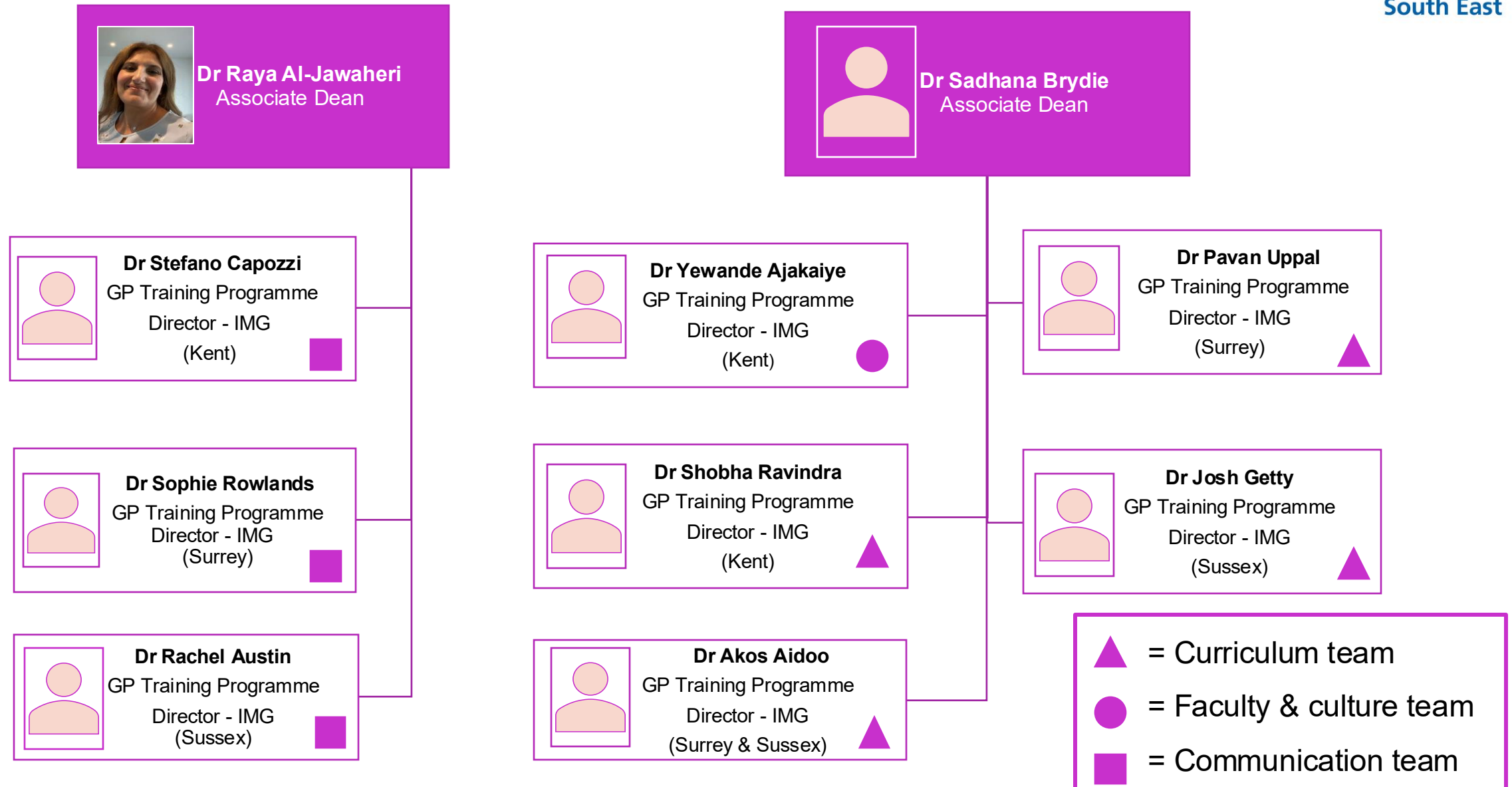


***ICS employed
Training Hub
Roles**

Contact:

sxicb.sussextraininghubs@nhs.net
www.sussextraininghub.org.uk

International Medical Graduate (IMG) Support faculty



WT&E SE KSS Primary Care administration structure

For GP School (including GP Retention Scheme, or Faculty Simulations)

england.ksspc.gpschool@nhs.net

For GP educator pathway enquiries

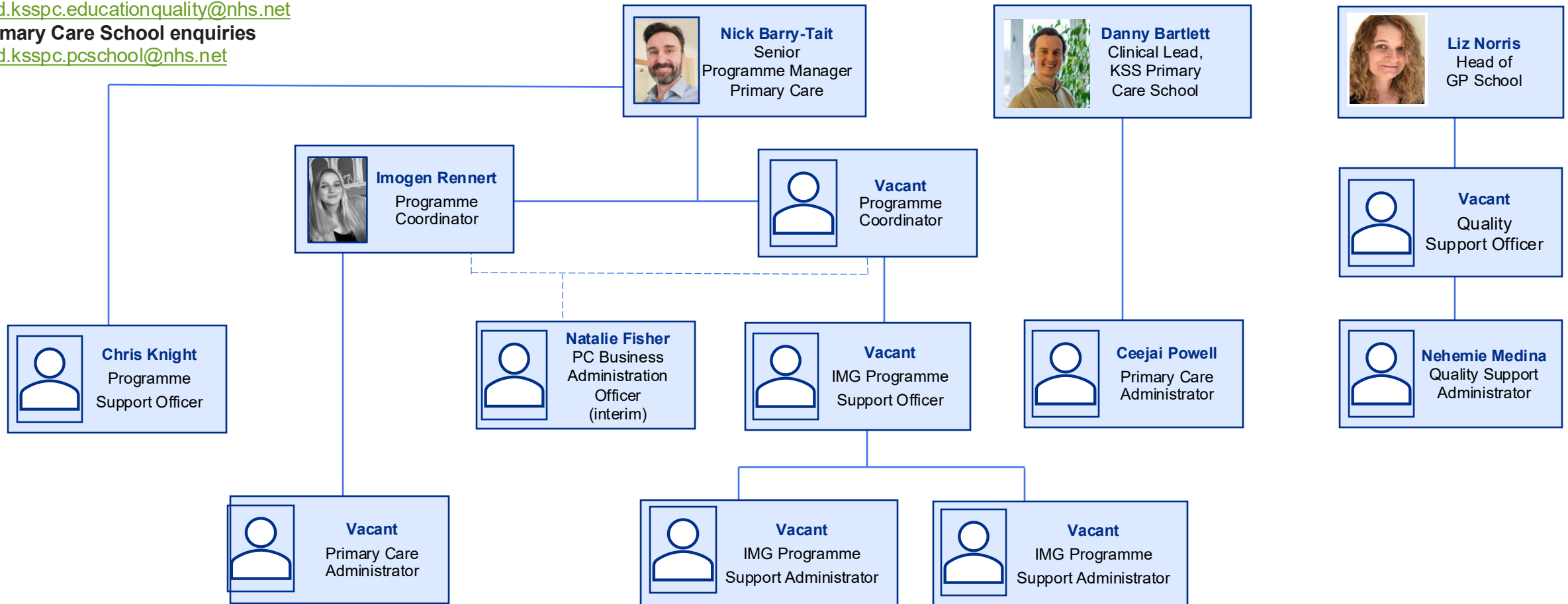
england.ksspc.educatorpathway@nhs.net

For Primary Care Quality enquiries (including GP educator accreditation)

england.ksspc.educationquality@nhs.net

For Primary Care School enquiries

england.ksspc.pcschool@nhs.net



Educator Pathway Team

