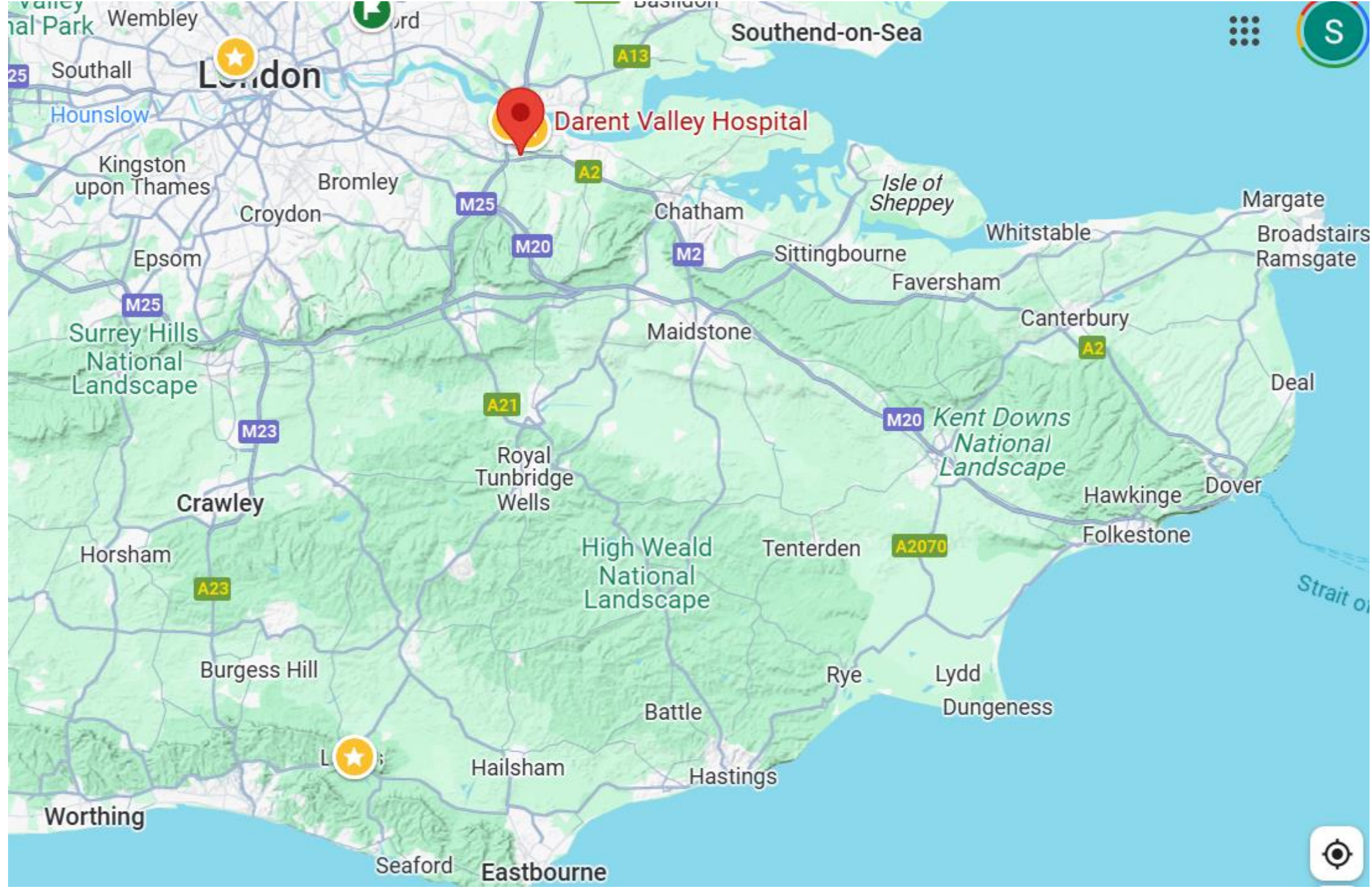


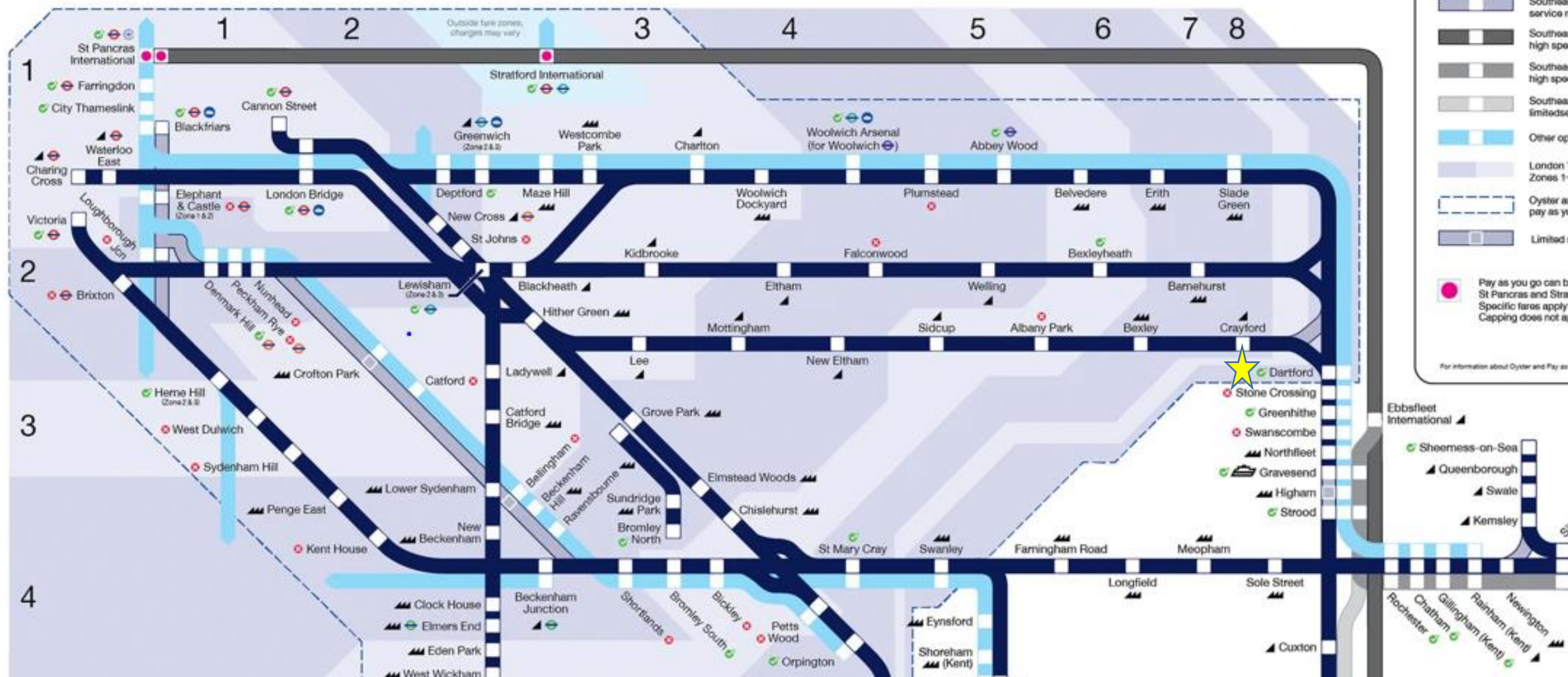
A photograph of the Darent Valley Hospital building, a modern structure with a curved roof and large glass windows. In the foreground, there are cherry blossom trees with white flowers. A white car and a white van are parked near the entrance. The sky is blue with some clouds.

Darent Valley Hospital

Dartford and Gravesham NHS Trust



Southeastern network map





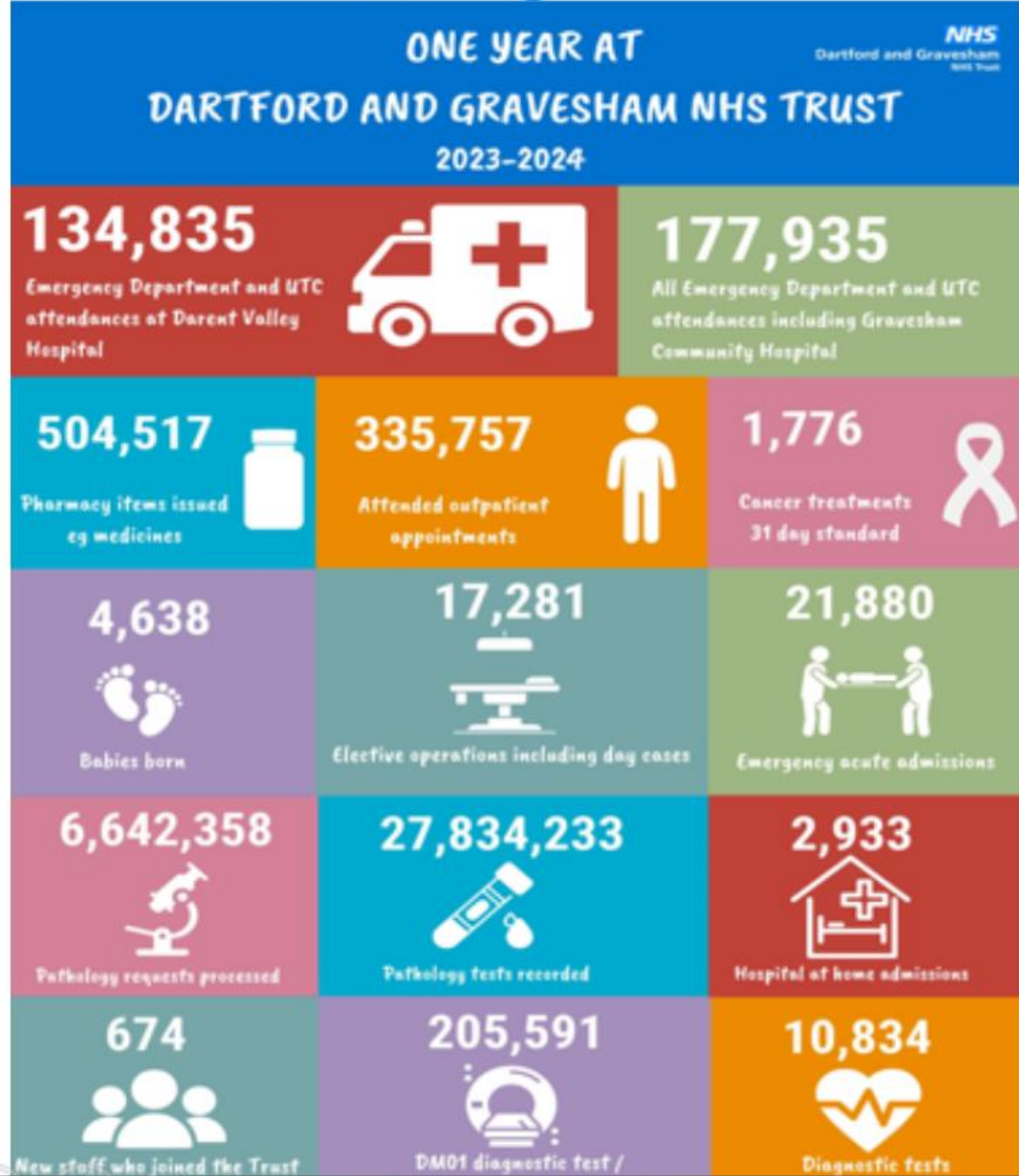




Living in Dartford & Gravesham

- Good transport links via M25
- Dartford is within TFL zone 8 with trains to Victoria and Charing Cross
- Ebbsfleet and Gravesend are connected via the high speed line to St Pancras
- Excellent primary and secondary schools
- Multicultural and diverse population with worship, cultural and retail facilities to match
- Area of significant population growth

Our Activity 2023/24



Darent Valley Hospital

- Large DGH in close proximity to London
- Local population 500,000 people
- Rated Good by CQC, on Journey to Outstanding pathway
- Hyperacute stroke unit recently opened

STAFF BENEFITS & REWARDS



- Wellbeing marquee with outdoor seating
- Car parking permits allocated for foundation doctors (£20 per month)
- On-site accommodation (from £25 per night, £599 per month) including flats for families

Foundation Programme – F1

- 52 F1 jobs
- F1 mandatory teaching 1-3pm Wednesdays, with lunch
- Rotations include
 - Acute Medicine/Cardiology/Endocrinology/Gastroenterology/Geriatrics/Respiratory/Stroke with Medical on call (approx 2 weekends per rotation, long days, no nights)
 - Critical care (3 months ITU) and anaesthetics (1 month) (1 weekend in 4, no long days or nights)
 - Emergency medicine (twilights until 11pm, 4 weekends per month, no nights)
 - General surgery/Urology with Surgical on call (approx 3 weekends per rotation, long days, no nights)
 - Paediatrics (9-5 weekdays)
 - Proactive care of the older patient undergoing surgery (medical placement with Surgical on calls)
 - Psychiatry (9-5 weekdays) with acute medicine days to keep up knowledge and skills

Foundation Programme – F2

- F2 rotations as per F1 rotations plus
 - Academic
 - Clinical Radiology
 - General Practice
 - Obstetrics & Gynaecology
 - Renal medicine
 - Trauma & Orthopaedics
- F2 mandatory teaching 1-3pm Tuesdays, with lunch

Local opportunities

- Skills lab
- Simulation team
- Teaching opportunities – medical students from GKT, KMMS and SGH
- Library with clinical librarian support for literature searches
- Schwartz rounds
- Balint style group for foundation doctors – starting soon
- Grand round
- Departmental teaching

Darent Valley Hospital

Positives

- 1) No night shifts in F1
- 2) Friendly and supportive environment in a smaller hospital
- 3) Close proximity to London

Negatives

- 1) Small mess and limited rest facilities overnight
- 2) Paper notes
- 3) Limited number of specialties on site



The Foundation Team

Director of Medical Education – Dr Cathy Ellis

Medical Education Manager – Helen Addison

F1 TPDs – Dr Mathias Toth & Dr Prasanna Aghoram

F2 TPDs – Dr Shahinul Khan & Dr Sophie Lam sophie.lam2@nhs.net

Medical Education Officers – Tracey Belcher & Emily Coinon
emily.coinon@nhs.net

