

Postpartum Haemorrhage

Quick Quiz

Qu 1.

Postpartum haemorrhage is

- Bleeding from the genital track after the 24th week of pregnancy?
- A blood loss of 500 ml or more with the first 6 hours after birth?
- A blood loss of 500 ml or more within the first 24 hours after birth?
- Bleeding gums?



Qu 1. *answer*

Postpartum haemorrhage is

- Bleeding from the genital track after the 24th week of pregnancy?
- A blood loss of 500 ml or more with the first 6 hours after birth?
- A blood loss of 500 ml or more within the first 24 hours after birth? v**
- Bleeding gums?



Qu 2.

Maternal haemoglobin below 90g/l at start of labour is a risk factor for major PPH

True ?

False ?



Qu 2. *answer*

Maternal haemoglobin below 90g/l at start of labour is a risk factor for major PPH

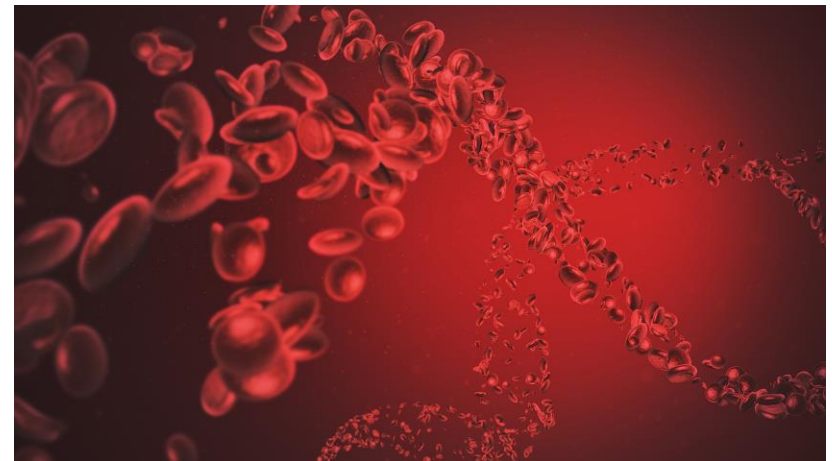
True ? ✓

False ?



Qu 3.

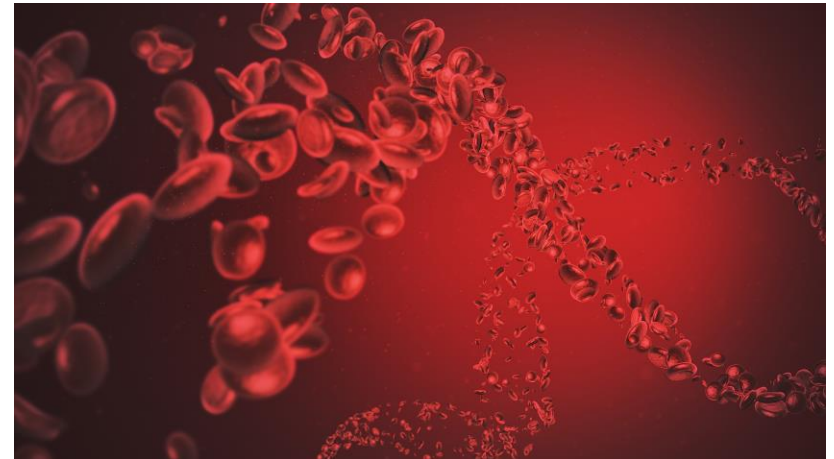
The most common cause for a major PPH is?



Qu 3. *answer*

The most common cause for a major PPH is?

TONE



Qu.4

Management of PPH-1st Action

- Massage the uterus ?
- Lie flat ?
- Call for help ?
- Reassure the mother ?



Qu.4 *answer*

Management of PPH-1st Action

- Massage the uterus ?
- Lie flat ?
- Call for help ? ✓
- Reassure the mother ?



Qu.5

Tranexamic acid can produce contraction of the uterine muscle?

True

False



Qu.5 *answer*

Tranexamic acid can produce contraction of the uterine muscle?

True

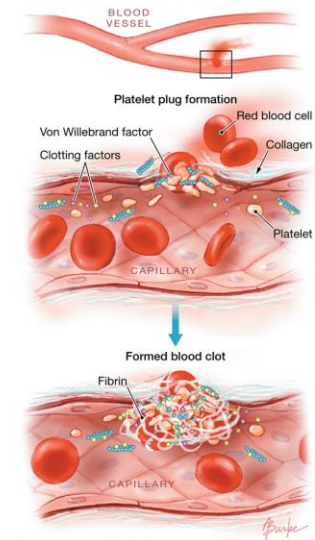
False ✓



Qu.6

In major PPH you can decrease the risk of the mother developing coagulopathy by.....

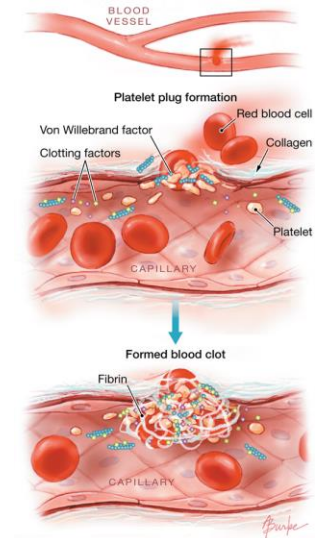
- Keeping the mother nil by mouth?
- Keeping the baby close to her?
- Giving her fluids rapidly?
- Keeping her warm?



Qu.6 answer

In major PPH you can decrease the risk of the mother developing coagulopathy by.....

- Keeping the mother nil by mouth?
- Keeping the baby close to her?
- Giving her fluids rapidly?
- Keeping her warm? ✓

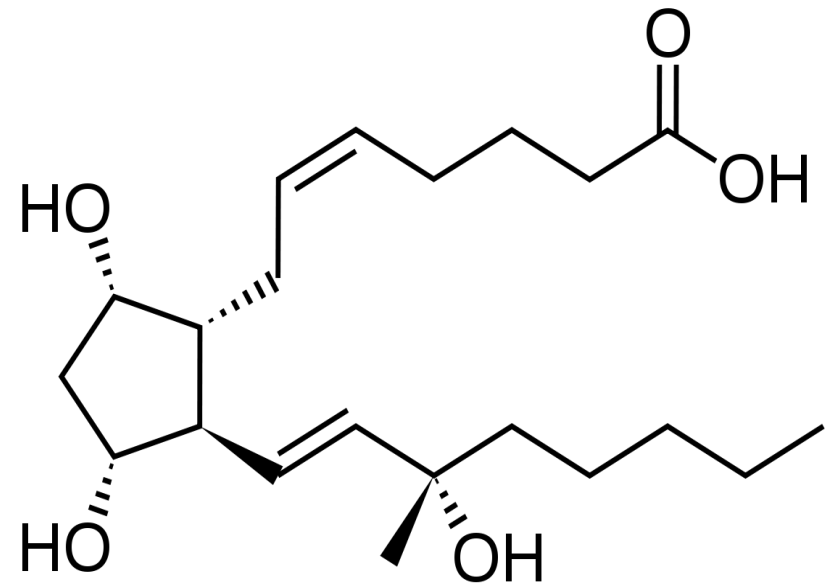


Qu.6

Carboprost dosage is 250 grams every 15 minutes up to 10 dosages

True ?

False?

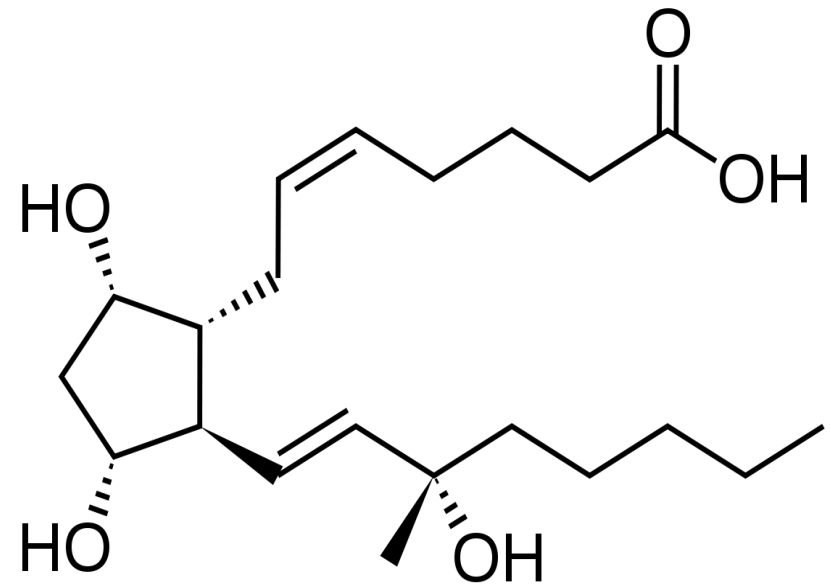


Qu.6 answer

Carboprost dosage is 250 grams every 15 minutes up to 10 dosages

True ?

False? ✓



Qu.7

Woman who have had an MOH are at risk of

- Renal Impairment
- Respiratory compromise
- Negative emotional wellbeing
- Venous thromboembolism



Qu.7 answer

Woman who have had an MOH are at risk of

- Renal Impairment ✓
- Respiratory compromise ✓
- Negative emotional wellbeing ✓
- Venous thromboembolism ✓

