

# Student Leadership Placements

Think

Think it

Drive

Drive it

Deliver

Deliver it







GAIN THE SKILLS THAT ARE  
NEEDED FOR YOUR FUTURE  
PRACTICE



BUILD ON YOUR  
CONFIDENCE



MAKE PROFESSIONAL  
RELATIONSHIPS IN DIFFERENT  
ORGANISATIONS



WORK ALONGSIDE  
ACADEMICS AND  
PROFESSIONALS



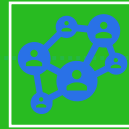
# Here are some opinions from Allied Health Professionals and AHP students:



"motivating your team and having good people skills"



"encouraging others to be courageous and voice their own ideas"



"somebody who is driven and embraces and promotes positive change, motivates, and inspires people"



"motivates others through actions not just words."



"Gain the skills that are needed for your future practice"



"Build on your confidence"



"It means you are always learning and are open to new ways of thinking"



"Make professional relationships in different organisations, Work alongside academics and professionals"



# STUDENT EXPERIENCES

"I felt nervous and scared to begin with but once I had finished, I felt empowered and confident. "

"I am shy and scared to speak up, the leadership placement helped me build my confidence and gain the skills I need to write my dissertation."

"I want to learn good leadership skills to help me in my future practice."

"I am interested in the field and would like to see this from an academic perspective and build on my experience."

"We all encounter opportunities to lead, inspire and make an impact"



# Students.....

What skills you may already have?

communicator?

organiser?

Enjoy working with Multi-Disciplinary professionals?

Prefer strategic planning?

Enjoy research?

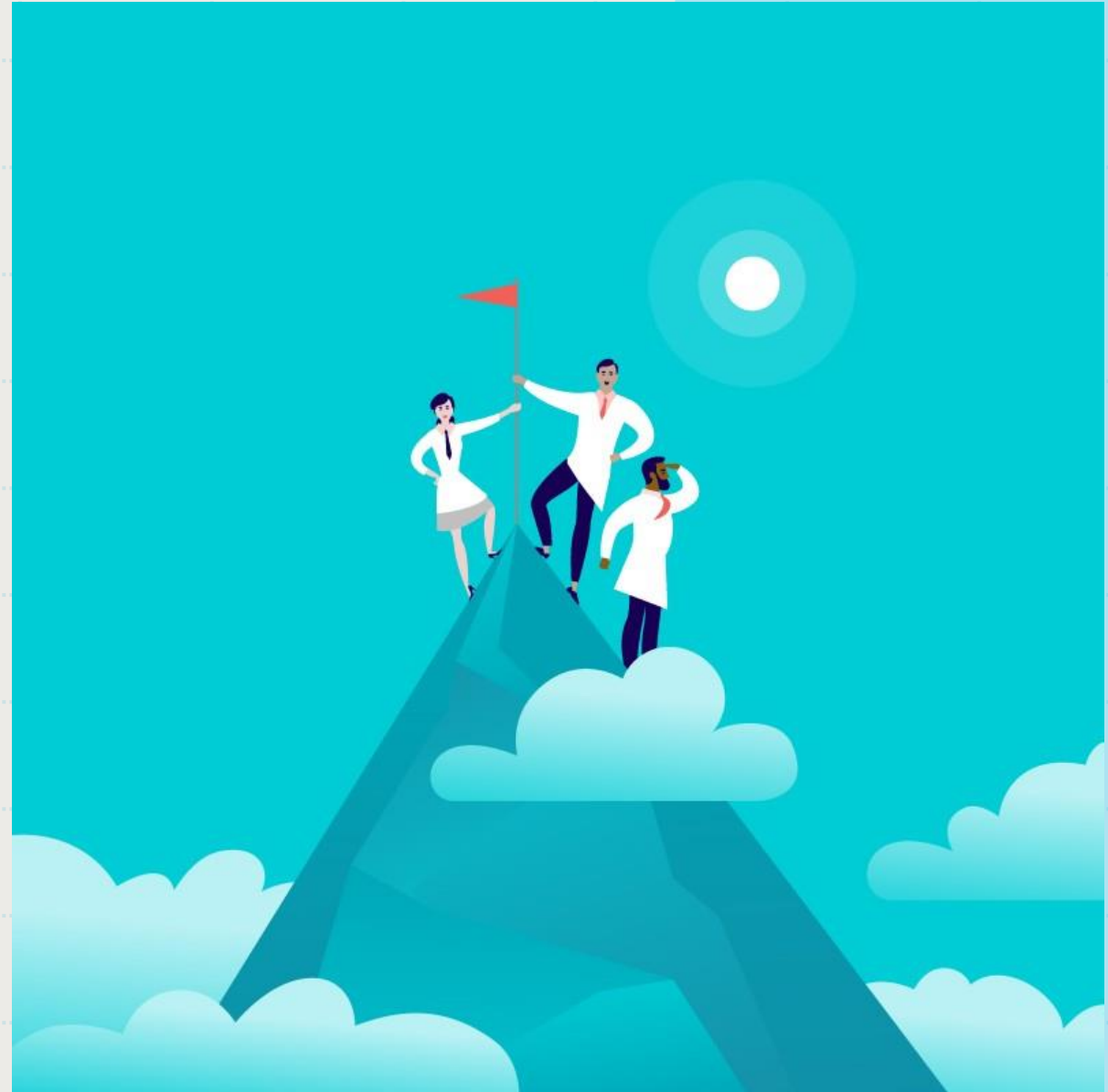
Want to lead a team?

Consider your own performance skills and develop these with a leadership placement.



# Career opportunities

1. **Going on a leadership placement will expose you to many different leadership roles in your professional field.....**
2. **Here are some examples**
3. **Operations Department Practitioner acute lead**
4. **Operations Department Practitioner course lead**
5. **Podiatry leads both clinical and non-clinical**
6. **Health Education England Quality Leads**
7. **Health Education England workforce leads**
8. **Regional Allied Health Professional Workforce Fellow**
9. **Radiographer Imaging leads**
10. **Radiographer diagnostic leads**
11. **Regional Head of Allied Health Professions Health Education England**
12. **Roles in research**
13. **Work force recruitment and retention**
14. **Professional bodies**



# Training

**The Edward Jenner  
program**

**NHS Leadership  
academy**

**The Mary Seacole  
Program**



Training is subject to organisation agreements





# Students!



Think it

Now you have thought about it..

Drive it

Now you know about it..

Deliver it

Now you can say yes and try a leadership placement!

