

WELCOME TO EAST SUSSEX HEALTHCARE NHS TRUST OUR TRUST VALUES



INTRODUCTION

- 3 community hospitals: Bexhill, Rye and Uckfield
- Over 100 community sites across East Sussex, and in people's own homes
- The only integrated provider of acute and community care in Sussex
- Over 7,000 dedicated members of staff
- One of the largest organisations in East Sussex, annual income of £568 million
- Conquest Hospital and our Community Services were rated 'Outstanding' and Eastbourne DGH was rated 'Good' – Care Quality Commission 2020
- Part of the Sussex Health and Care Integrated Care System (ICS), which is made up of health and care organisations across Sussex



CONQUEST HOSPITAL

- Emergency department
- 24 hour a day care, offering a comprehensive range of surgical, medical, outpatient and maternity services, supported by a full range of diagnostic and therapy services.
- The Conquest Hospital is also the centre for Trauma Services and Obstetrics
- Drs Mess with a range of social activities
- There is also a canteen, 1066 Café and gift shop
- We also have a large pond and picnic area
- 24 hour Library
- Education Centre



EASTBOURNE DISTRICT GENERAL HOSPITAL

- Emergency department
- 24 hour a day care, offering a comprehensive range of surgical, medical, outpatient and maternity services, supported by a full range of diagnostic and therapy services.
- Eastbourne also provides urology, haematology, ENT and stroke services.
- Canteen, League of Friends shop and Coffee shop
- Education Centre
- Library
- Drs Mess also offering a range of events
- Social Club

OUR LAST YEAR

- Our last year
- 150,000 attendances at our Emergency Departments
- 2,939 babies were born in our hospitals
- 50,000 people had planned surgery, 90% of these were day cases
- 24,000 cancer referrals were made to us
- 420,000 outpatient appointments, of these over 285,000 were consultant-led
- 290,000 x-ray and scans
- 1,200,000 calls were answered by our switchboard teams

WHAT WE OFFER FOR FY₁ DOCTORS AT ESHT

- Rotations in the following specialities: Posts in Surgery, Elderly Medicine, Psychiatry, Diabetes, Urology, Respiratory, Gastro, Cardiology, Palliative Medicine, Paediatrics, Rheumatology, Acute Medicine and ITU.
- We offer Foundation Priority Programmes with elements of emergency medicine ultrasound and Pathology
- We currently offer the Foundation Leadership programme and we hope to offer a Leadership Programme for 2024-2025
- Kent, Surrey and Sussex Foundation School manage recruitment

WHAT WE OFFER FY₂ DOCTORS AT ESHT

- Posts in General Practice, Elderly Medicine, Respiratory, Cardiology, Orthopaedics, Emergency Department, ENT, Paediatrics, Diabetes, Ophthalmology, Public Health, Psychiatry, Palliative Care and Urology.
- Opportunity to take part in KSS Leadership Academy Programmes and ESHT Leading Excellence and Leading Service Programmes.
- For further information regarding the Foundation Year 2 Programme please contact the FY₂ Programme Administrator.

FY₁ AND FY₂ TEACHING

- Weekly teaching, extended workshops, Grand Rounds, departmental teaching
- Self-Directed and Personal Learning
- Structured Appraisals & Assessments
- ESHT runs a Leadership Programme (LEAP), which all junior doctors are invited to attend.
- Both sites have excellent medical student programmes and Foundation Trainees are encouraged to take part in supporting, mentoring and teaching the medical students.

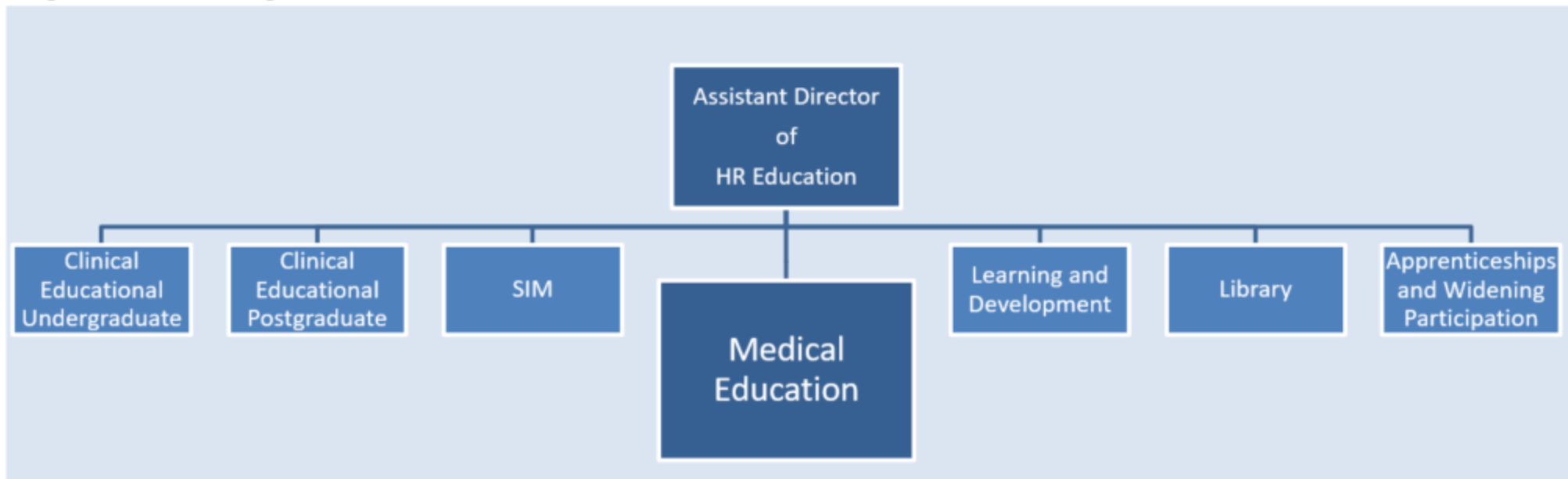
SUPPORT FOR JUNIOR DOCTORS AT ESHT:

Care First / Our Values
Pastoral Fellows:
(Jolie Wilkinson Conq)
(Paul Gosling EDGH)
& Chaplaincy Team
Dedicated Educational
& Clinical Supervisors



THE INTEGRATED EDUCATION TEAM

Integrated Education – Organisational Chart



A wide-angle photograph of Hastings beach and pier. The foreground shows a dark metal railing of the pier. The middle ground features a wide, sandy beach with a few people walking. In the background, a row of white buildings is visible along the coast under a blue sky with scattered white clouds.

LIFE IN HASTINGS

- Hastings Beach and Pier
- Museums, theatres and Art Galleries including Fishermen's Museum, Hastings Museum and Art Gallery, Hastings True Crime Museum, White Rock and The Stables Theatres, Jerwood Gallery and a range of smaller Art Galleries
- Historic buildings including Hastings Castle and St Clements Caves in the Old Town
- Hastings Old Town, Town Centre and St Leonards Sea Front shops, cinema, leisure centre, restaurants and bars
- Lively music scene for all genres, including Pier Events, The Oval events and local bands in pubs and bars
- Lovely walks including Alexandra Park, Fairlight and the East and West Hills
- We are also within commutable distance to London and Brighton

An aerial photograph of Eastbourne, showing a wide sandy beach, a long pier extending into the sea, and a row of white buildings along the coast under a blue sky with light clouds.

LIFE IN EASTBOURNE

- Eastbourne beach, pier and band stand– regular events and lively music scene
- Devonshire Park Theatre & Congress Theatre, Towner Art Gallery and a range of other museums and art galleries and a leisure centre
- Beacon Shopping centre, partly undercover with a range of shops, bars and restaurants and a cinema
- Annual events including Eastbourne International Tennis and Airbourne Airshow
- Lovely Parks including Hampden Park and Princess Park
- Sovereign Harbour Marina
- Plenty of scenic walks on the South Downs, Beachy Head and Birling Gap and the Seven Sisters Country Park
- Also within commutable distance to London and Brighton

FURTHER INFORMATION

Further information is available below:

<https://youtu.be/nCA29cqCJYk>

Q & A

- We would love to answer any queries that you may have

