

HEE KSS Deanery Day

In honour of Graeme Dewhurst's career as Regional Dean for HEE South East and Kent, Surrey and Sussex (KSS)

24 June 2022

Morning agenda:

Timings	iTalk Lounge	Mansell McTaggart
08:40 – 09:20	Welcome and registration – tea / coffees and mixed pastries available (iTalk Lounge)	
Session 1 09:30 – 10:30	Differential Attainment (DA) in KSS Chair: Miss Fiona O'Sullivan Speakers: <ul style="list-style-type: none">• Miss Fiona O'Sullivan: Introduction to Differential Attainment.• Dr Liz Norris: How KSS GP School is tackling DA.• Ms Julie Kohls: Levelling up attainment for International Medical Graduates.	Clinical Tutors Advisory Group (CTAG) meeting Chair: Dr Sarah Rafferty By invitation only: Meeting for Directors of Medical Education, Medical Education Managers and Heads of School.
Session 2 10:30 – 11:30	Building The Future On Firm Foundation Chair and speaker: Professor Ali Bokhari Speaker: <ul style="list-style-type: none">• Andy Buttery	
11:30 – 12:00	Break – tea / coffee and selection flapjack and doughnuts (iTalk Lounge)	

Afternoon agenda:

Timings	iTalk Lounge
Session 3 12:00 – 13:30	KSS: Past, Present, Future Chair: Dr Sarah Rafferty Speakers: <ul style="list-style-type: none">• Professor Chris Warwick: Primary care past and future.• Donna Poole: Multi-professional clinical education and transformation past and future.• Professor Nik Patel: The school of medicine past and future.• Ms Mili Doshi: 'Why Mouth Care Really Matters?' (video).• Dr Natalie King: Physician associates in the South East - looking to the future.
Session 4 13:30 – 14:00	Remarks in honour of Professor Graeme Dewhurst Chair: Philippa Spicer Speakers: <ul style="list-style-type: none">• Dr Navina Evans: Remarks in honour of Graeme Dewhurst
14:00 – 15:00	Lunch
Session 5 15:00 – 15:30	Tribute to Professor Graeme Dewhurst Chair: Ruth Monger and Philippa Spicer Speakers: <ul style="list-style-type: none">• Professor Graeme Dewhurst: Reflections on KSS• Dr Jo Szram: New Dean Introduction• Ruth Monger and Philippa Spicer: Closing remarks

Speakers

**Miss Fiona O' Sullivan,
Sussex County Dean (KSS) and Lead
for Differential Attainment,
HEE South East,
Consultant Ophthalmologist,
Surrey and Sussex Healthcare NHS
Trust**



Miss Fiona O' Sullivan is a practising ophthalmologist and also works in HEE South East. She was Head of Ophthalmology School with HEE London from 2010-2017. During this time Fiona developed a Spiral Leadership Tool. Since 2020 she have been County Dean with HEE KSS.

Fiona is also Lead for Differential Attainment (DA) in KSS since 2021 and works with colleagues on initiatives to support International Medical graduates and enhance educational support skills in addressing DA.

Speakers

**Dr Sarah Rafferty,
Deputy Dean for Secondary Care /
Associate Dean for Quality and
Clinical Leadership (KSS),
HEE South East**



Dr Sarah Rafferty has been a consultant in anaesthesia and intensive care at Surrey and Sussex Healthcare NHS Trust (SASH) for 20 years, and became DME at SASH in 2013. In this role, Sarah manages the programmes and educational environment for medical students, doctors, and dentists in training. As Chief of education Sarah supports the education and development of all staff at SASH at executive board level, which is both a pleasure and a privilege.

Sarah has chaired CTAG, the KSS DMEs' group since 2016 and in her deputy role is leading on the KSS expansion and distribution programme. She is also currently lead for Quality in KSS.

Speakers

**Dr Liz Norris,
Head of GP School and Deputy
Primary Care Dean (KSS),
HEE South East**



Dr Liz Norris qualified as a GP in 2002 and was a GP partner in Mid-Sussex until 2019. Recently she has started working clinically as a GP in the emergency department for University Hospital Sussex NHS Foundation Trust. Liz's career as an educator began in 2009 as Mid-Sussex TPD, shortly afterwards also becoming the Academic Mentor for Sussex. In 2016 Liz became Associate Dean for West Sussex and in February 2020 was appointed as Head of GP School working across Kent, Sussex and Surrey for HEE.

Liz has developed an interest in supporting trainees with neurodiversity as an associate dean and have been proactive in addressing differential attainment within GP training since becoming head of school. She is passionate about positive, inclusive, education and support and is keen to ensure success, wellbeing and attainment for all.

Speakers

Ms Julie Kohls FRCS (tr and orth) BSc MEd



Julie Kohls is an Orthopaedic Surgeon who has led the Foundation Programme at the Royal Surrey NHS Foundation Trust since 2010. Julie is Canadian and has a master's degree in education from the University of Toronto where she started her surgical training. In 1999, Julie relocated to London and then completed her training on the North-West Thames Programme.

Julie created the Royal Surrey Trust Grade Programme in 2013 for International Medical Graduates. The programme has grown from five doctors working in the Trust for one year to 11 F1s who now stay for a full two-year programme plus 34 F2 IMG doctors.

Julie's experiences of training in different countries, her experiences of less than full time working during training and her experiences of being different have given her compassion and understanding for the struggles of trainee doctors. Julie focuses on empowering trainee with leadership projects that involve them in their training.

Speakers

**Professor Ali Bokhari,
Kent County Dean (KSS),
HEE South East**



Professor Ali Bokhari qualified from the Middlesex and University College Medical School London. He then trained in paediatrics and is a Consultant Paediatrician with expertise in cardiology. Ali is Director of Clinical Education at Dartford and Gravesham NHS Trust.

In 2016, Ali was appointed County Dean for Kent at HEE KSS. In this role he oversees and supports education and training across the most populous county in KSS. As regional lead for simulation, Ali is developing a masters level programme at the Canterbury Christchurch University.

Speakers

Andy Buttery,
Simulation and Human Factors
Project Lead,
Canterbury Christ Church University



After 20 years as an Operating Department Practitioner (ODP), Andy took on a full-time educator role as Simulation Specialist in 2004.

Human Factors Editor for the European Simulation Conference (SESAM) in 2014, 2015 and the European subject expert for the first International Certification as Healthcare Simulation Educator.

Previously a Resuscitation Council (UK) ALS Instructor and GIC Faculty; ACLS Provider; TeamSTEPPS Master Trainer; Simulated Patient Framework SP and SP Trainer; CHSE; and co-author of a few papers, including HEE support for simulation in pandemic.

National ASPIH Executive and Regional Lead for CIEHF, as Simulation and Human Factors Project Lead for HEE KSS, role is largely managerial and developmental, although Andy sometimes manages to sneak out and teach on occasion!

Speakers

**Professor Chris Warwick,
Primary Care Dean and Deputy
Postgraduate Dean (KSS),
HEE South East**



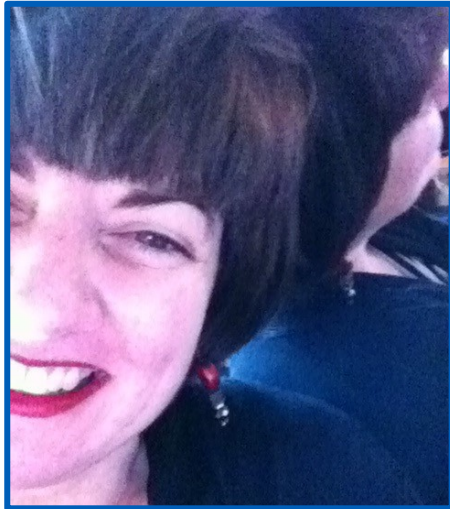
Professor Chris Warwick is a proud GP and Primary Care Dean for Health Education England across Kent, Surrey and Sussex. He leads education and training for the entire primary care workforce in the region, an inclusive champion of multi- and inter-professional working and learning.

He works closely with system and regional NHS leaders, striving collaboratively to address the significant challenges to the primary care workforce.

Chris is a governance expert and is fully committed to collaborative solutions to accelerate closer integration of services, and of the health and care workforce. He has recently taken on the additional strategic leadership roles of Chair of HEE Primary Care Deans, and Vice Chair of Committee of General Practice Education Directors.

Speakers

Donna Poole,
Head of Workforce Transformation,
HEE South East



With her background in nursing, multi-professional working and education across two countries spanning 34 years, Donna brings diverse experience and knowledge to workforce transformation.

Donna has practiced and studied in spinal cord injury nursing, rehabilitation, remote area nursing, community and domiciliary care, case management and vocational and higher education over her career. This means that Donna has an in-depth understanding of the education and transformation agenda, being strongly committed to ensuring the right knowledge, skills and behaviours are in the right place at the right time for maximum positive impact on improving the health and care of populations.

Donna is currently the Head of Workforce Education Transformation for HEE, SE.

Speakers

**Professor Nik Patel,
Head of School for
Medicine (KSS),
HEE South East**



Professor Nikhil Patel Consultant Cardiologist, practicing at East Sussex Healthcare NHS Trust (ESHT). Since 2016, Nick has been Head of School for Medicine KSS, having taken over from Professor Graeme Dewhurst. He was formerly a training programme director for Cardiology, Core medical training and a RCP college tutor.

Professor Patel undertakes a range of educational roles, overseeing training programmes in the Kent Surrey and Sussex School of Medicine. He has co-supervised higher research degrees at MSc and PhD level and continues to undertake research into cardiac devices management, heart valve disease, exercise heart function, and areas of clinical cardiology. He was elected as Chair of the Royal Society of Medicine's Academic Board in 2019. He has been privileged to have had support and mentorship from Professor Dewhurst over the last 20 years.

Speakers

**Ms Mili Doshi MBE,
Consultant in Special Care
Dentistry,
Surrey and Sussex Health
Care NHS Trust and the Royal
Hospital for Neuro-disability**



Mili Doshi is a Consultant in Special Care Dentistry at Surrey and Sussex Health Care NHS Trust and the Royal Hospital for Neuro-disability. Mili has always been very committed to dental training and improving oral health services for adults with additional needs. Mili has a special interest in sedation and general anaesthesia in Special Care Dentistry.

In 2015, Mili developed the Health Education England national initiative 'Mouth Care Matters' to improve the oral health of adults in hospitals. This quality improvement project was rolled out across 43 hospitals in England and focused on improving standard of mouth care and integrating oral health and general health. Mili is past president of the British Society of Gerodontology and was awarded a MBE in 2018 for service to NHS dentistry.

Speakers

**Dr Natalie King,
Head of the KSS School of Physician
Associates and Clinical Director for
Emergency Access,
Surrey and Sussex Healthcare NHS
Trust**



Dr Natalie King is a Consultant in Acute Medicine and has helped to train and support physician associates (PA) for over 10 years. In 2015 she helped to set up the HEE supported KSS School of Physician Associates to develop the PA profession in region.

She has also been a board member of the Faculty of Physician Associates at the Royal College of Physicians and co-wrote the employer's guidance, portfolio and appraisal tools during her term in office.

The KSS School are currently aligning with the Thames Valley and Wessex School to form a combined South East Physician Associate School.

Speakers

Philippa Spicer,
Transition Director,
Health Education England



Philippa has been in the NHS since 1995 having previously worked in the private sector specialising in employee relations and TUPE (Transfer of Undertakings (Protection of Employment)). She has worked as a director in all aspects of the NHS including acute, community, mental health and learning disabilities, primary care trusts, and strategic health authorities; where she was responsible for education, training and workforce assurance across the region. During this time she also chaired the regional social partnership forum and the HR directors forum for the region.

Philippa was one of the original managing directors for HEE, having established a Local Education and Training Board for Kent, Sussex and Surrey in 2012 and was recently HEE's joint Regional Director for South East. Philippa has now taken up the post of National Transition Director, on secondment from the south east, to manage the transfer of HEE into the new NHS England.

Speakers

**Dr Navina Evans MBBS DCH
MRCPsych CBE,
Chief Executive,
Health Education England**



Dr Navina Evans joined HEE on 1 October 2020 from East London NHS Foundation Trust (ELFT) where she had been Chief Executive since 2016. She has over twenty years of clinical experience in psychiatry, medicine and paediatrics and previously held the positions of Deputy Chief Executive and Director of Operations. Navina has worked as the Clinical Director for Child and Adolescent Mental Health Services at ELFT.

She has also been involved in medical education and provided pastoral care to medical students. Navina acts as a trustee for Think Ahead Organisation which develops training programmes for mental health social work. She was awarded an honorary fellowship by the Royal College of Psychiatrists in 2020.

Navina uses her voice in support of staff wellbeing and coproduction with patients, advocating for the best possible quality of life and creating a culture of enjoying work for staff. She was awarded the Commander of the British Empire in the 2020 New Year's Honours List for services to NHS Leadership and Black, Asian and Minority Ethnic communities.

Speakers

Ruth Monger,
Regional Director,
HEE South East



Ruth joined the NHS as an Occupational Therapist in 1986. She moved into management in the 1990s and subsequently managed mental health, community and learning disability services for both adults and children, including managing child adolescent and mental health services in Dorset and South London. In 2002 Ruth was appointed as the workforce redesign lead at Central South Coast Cancer network. In 2009, she became the Head of Workforce Planning for South Central Strategic Health Authority. Ruth was involved in establishing the Local Education Training Boards for Wessex and Thames Valley and worked as the Head of Workforce Strategy and Planning for both until becoming Local Director for HEE's Wessex Team in November 2014, she subsequently became Local Director for Thames Valley as well in June 2018.

Ruth is now the Regional Director for the South East.

Speakers

Dr Jo Szram,
Postgraduate Dean for KSS,
HEE South East



Dr Jo Szram trained and worked in Cambridge, Peterborough, Leicester, Nottingham and London. She is a consultant respiratory physician specialising in occupational lung disease at Royal Brompton Hospital, part of Guy's and St Thomas's NHS Foundation Trust. She is currently clinical advisor for HEE's medical reform programme, leading on the enhance (Enhancing Generalist Skills) and Flexible Portfolio Training (FPT) programmes. She chairs Medical Education Leaders UK (previously NACT UK), which represents and supports directors of medical education and other postgraduate educational leaders across the four nations to champion improvements in education for all healthcare learners.

Jo is also an appointed officer of the Royal College of Physicians as Linacre Fellow, a role focused on the development and leadership of the RCP's network of college tutors and associate college tutors, linking their work to that of the Medical Students and Foundation Doctors network, Trainees and New Consultants Committees. She is also a trustee councillor at the College. Her work on the editorial board of the Future Healthcare Journal has provided the opportunity to influence the evolution of the publication as a way to empower all, particularly doctors in training, to demonstrate what they have learnt, and spread and share their knowledge widely.

WiFi - Code: Amex Events

Password: 8he7aswa